

Wettergrafiken und Tabelle Oktober 2014 Station Schlangen

Klimadaten Wetterstation Schlangen

Standortkoordinaten: geogr. 08°43' "O - 51°47' "N

172 m ü. NN

Monatswerte: Okt. 2014

Temperaturmittel: 12,6°C (Vj.11,0 °C)

Lj.Mittel:(Lipp.1961-90): 10,1 °C

Abweichung 2,5 °C

Absoluts Max.: 22,9 °C

Absolutes Min 0,2 °C

Tage mit Schneedecke:

Eistage(Max<0,0°C):

Frosttage(MIN<0,0°C):

Sommertage(Max>=25°C):

Heiße Tage(Max>=30°C):

Niederschlagssumme: 80,6 mm (Vj.79,7 mm)

Max.Tag: 21,7 mm

Lj.Mittel(Lipp. 1961-90): 59,5 mm

Regentage: 18 (Vj. 17)

Luftdruck(Meereshöhe):hPa

Absolutes Max.: 1030

Absolutes Min.: 997

Mittel: 1016

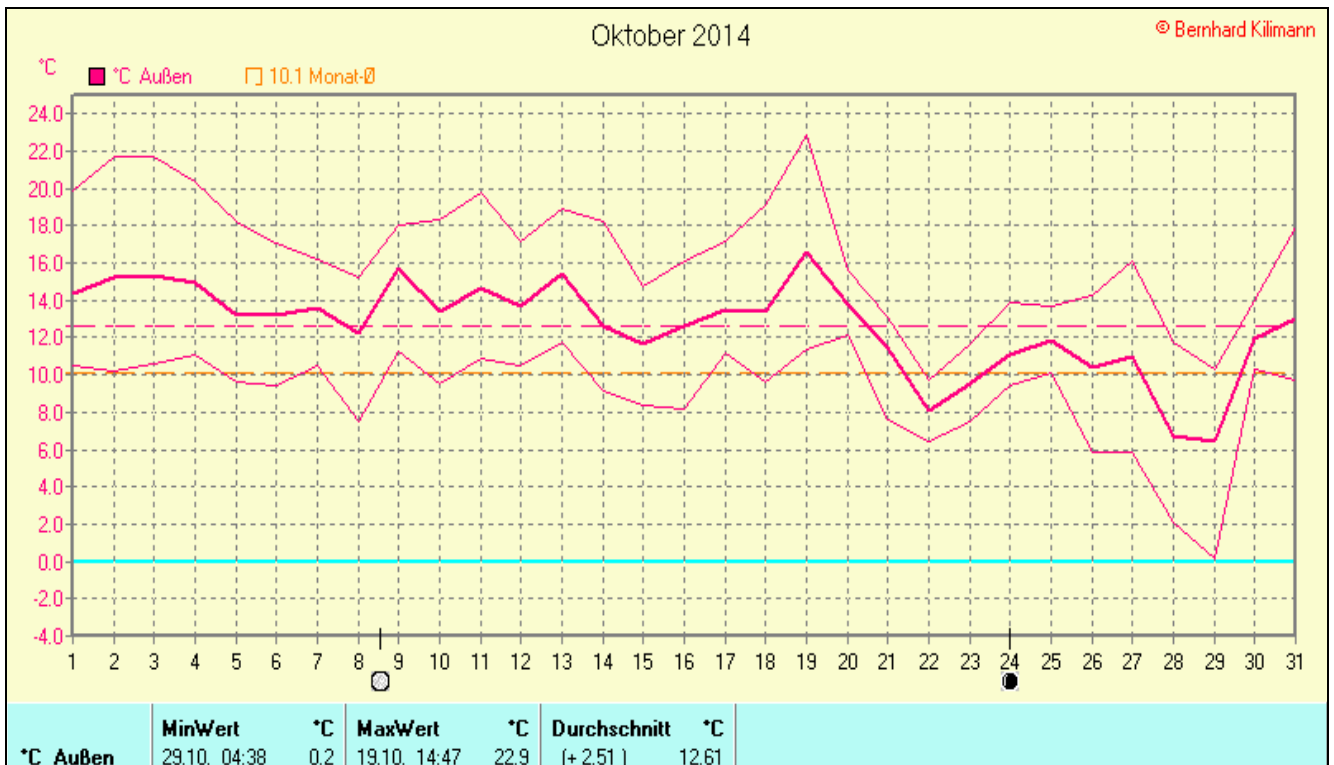
Mittel relative Feuchte: 84,0 %

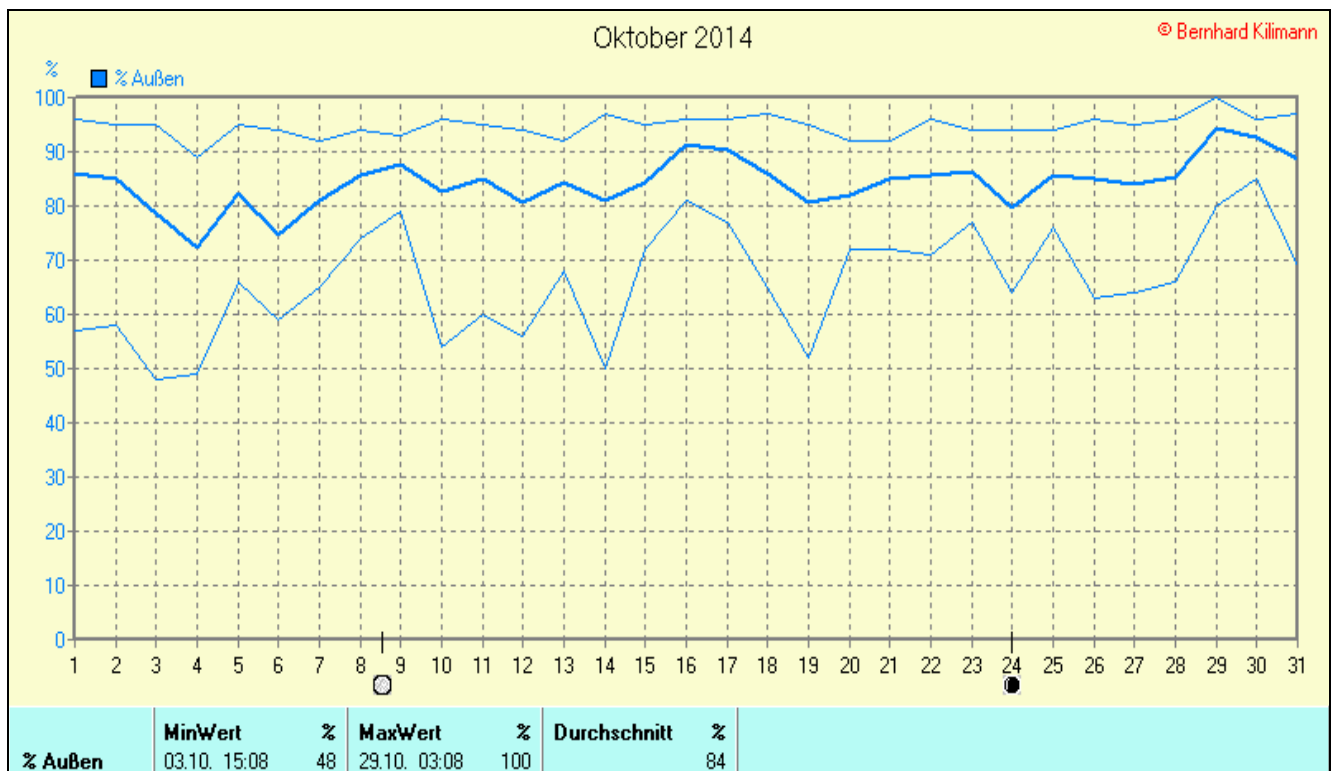
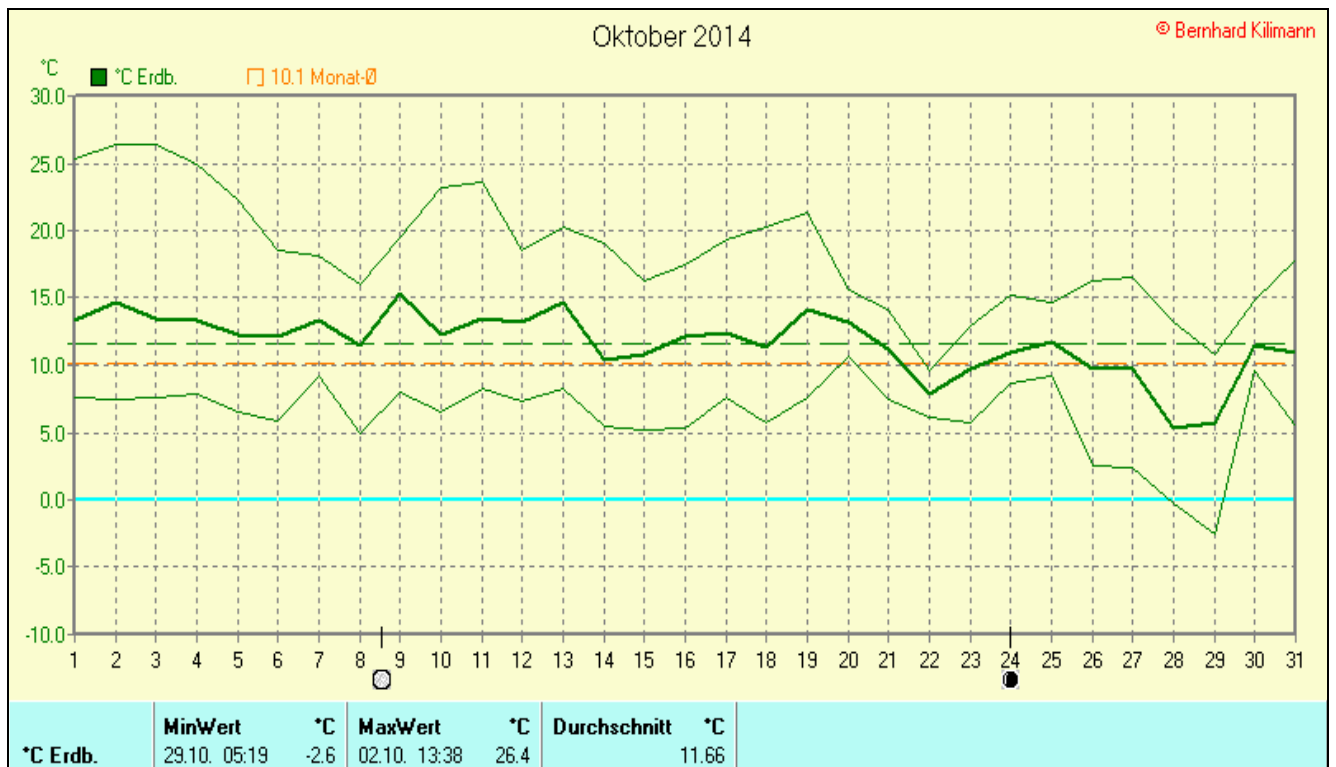
Max. Windböe: 36,2 km/h

Mittlere Wind: 5,8 km/h

Sonnenscheindauer: 101,7 h

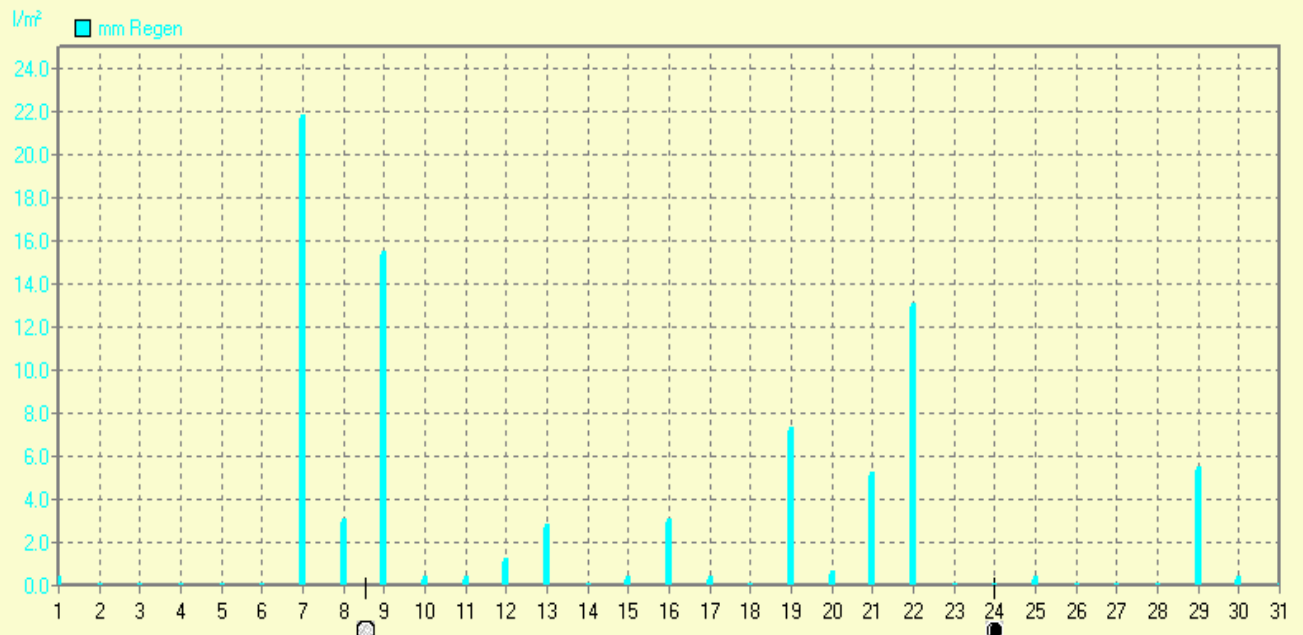
Lj.Mittel(Lipp.1961-90): 108,0 h





Oktober 2014

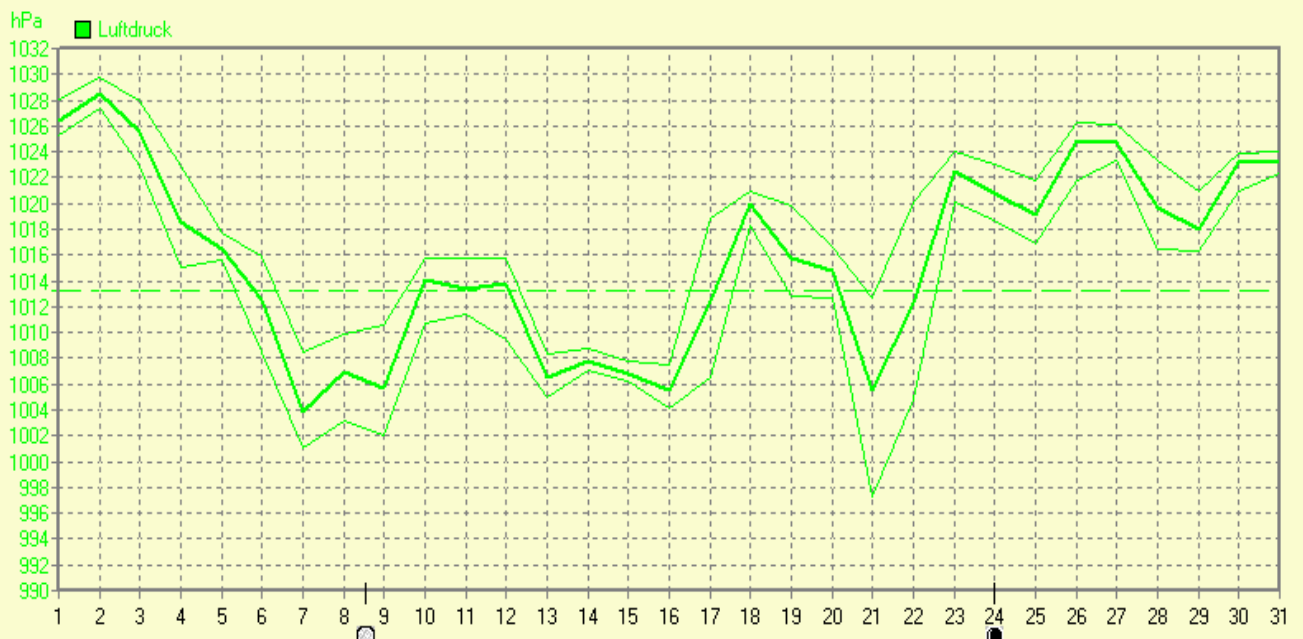
© Bernhard Kilmann



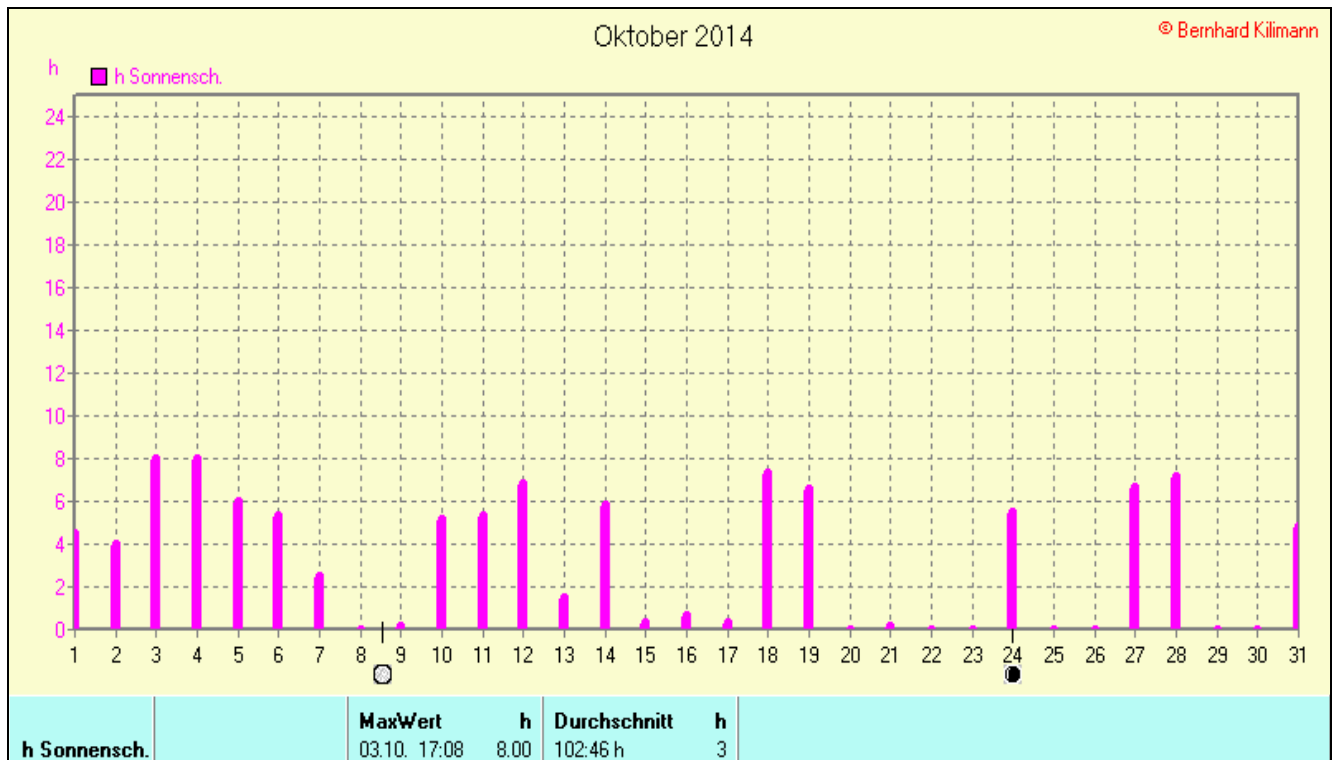
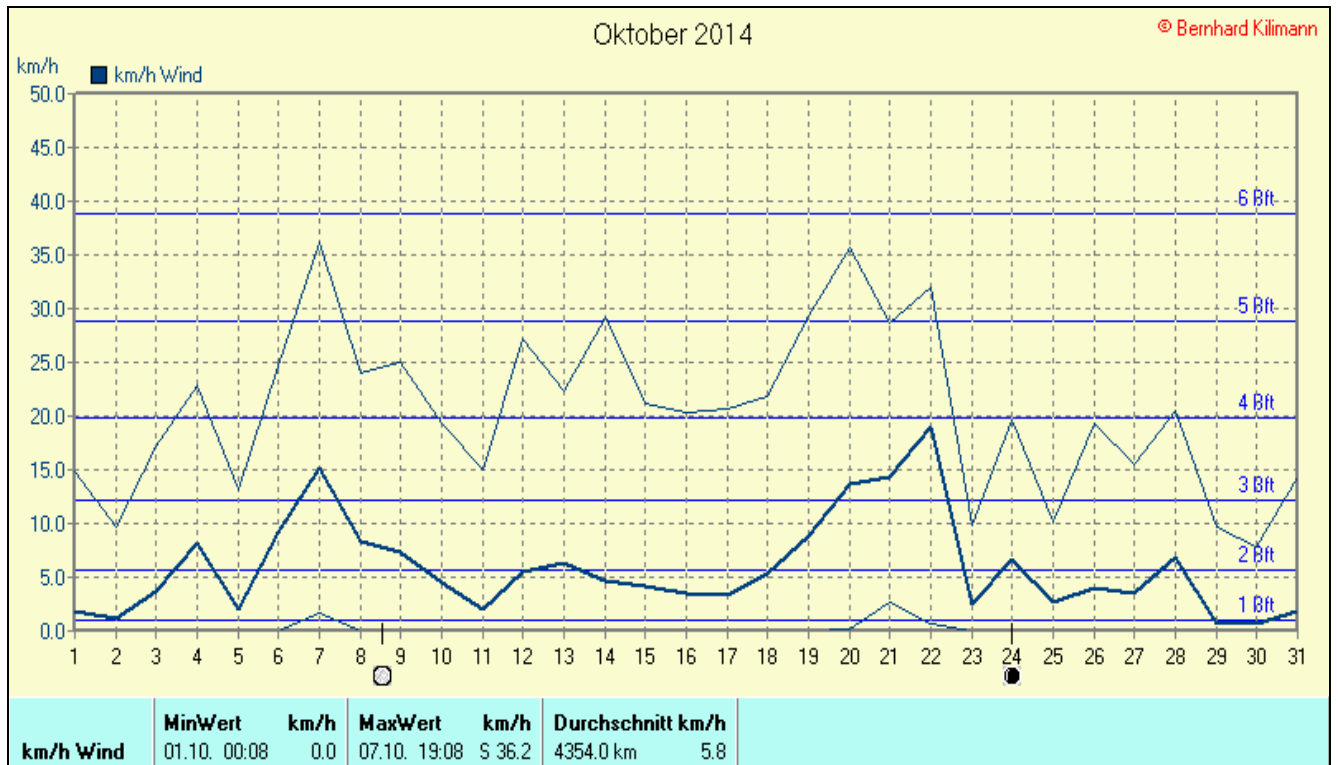
| | | | | | |
|-----------------|------------------|----------------|-------------|---------------|-------------|
| mm Regen | Regentage | MaxWert | l/m² | Gesamt | l/m² |
| | 18 | 07.10. 11:28 | 21.7 | | 80.6 |

Oktober 2014

© Bernhard Kilmann

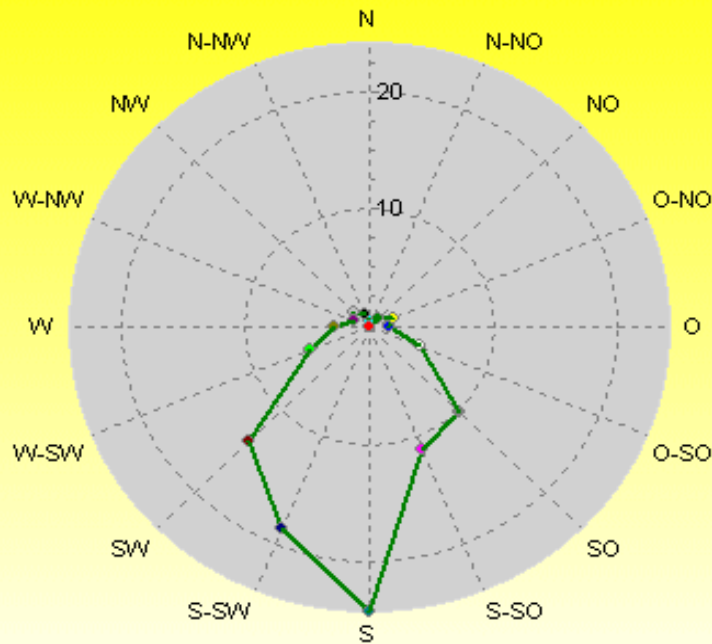


| | | | | | | |
|------------------|----------------|------------|----------------|------------|---------------------|------------|
| Luftdruck | MinWert | hPa | MaxWert | hPa | Durchschnitt | hPa |
| | 21.10. 17:07 | 997.3 | 02.10. 09:18 | 1029.8 | | 1015.8 |



Verteilung Windrichtung Oktober 2014

Schlangen, südl. Teutoburger Wald



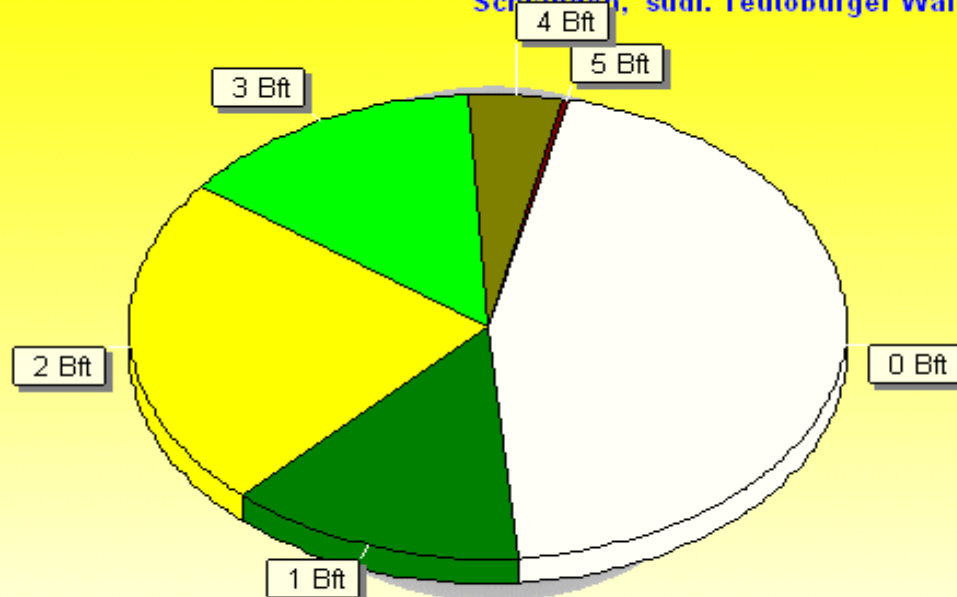
| | % |
|------|-------|
| N | 0,53 |
| N-NW | 1,10 |
| NW | 1,87 |
| W-NW | 1,46 |
| W | 2,80 |
| W-SW | 5,15 |
| SW | 13,71 |
| S-SW | 18,54 |
| S | 24,18 |
| S-SO | 11,32 |
| SO | 10,30 |
| O-SO | 4,38 |
| O | 1,58 |
| O-NO | 2,11 |
| NO | 0,93 |
| N-NO | 0,04 |

2465 / 2028 Werte -> 45.1% Windstille - Ø 5,8km/h - Max. 36,2km/h - 4354.0 km

© WsWin32 - © Bernhard Kilmann - Schlangen, südl. Teutoburger Wald

Verteilung Windstärke Oktober 2014

Schlangen, südl. Teutoburger Wald

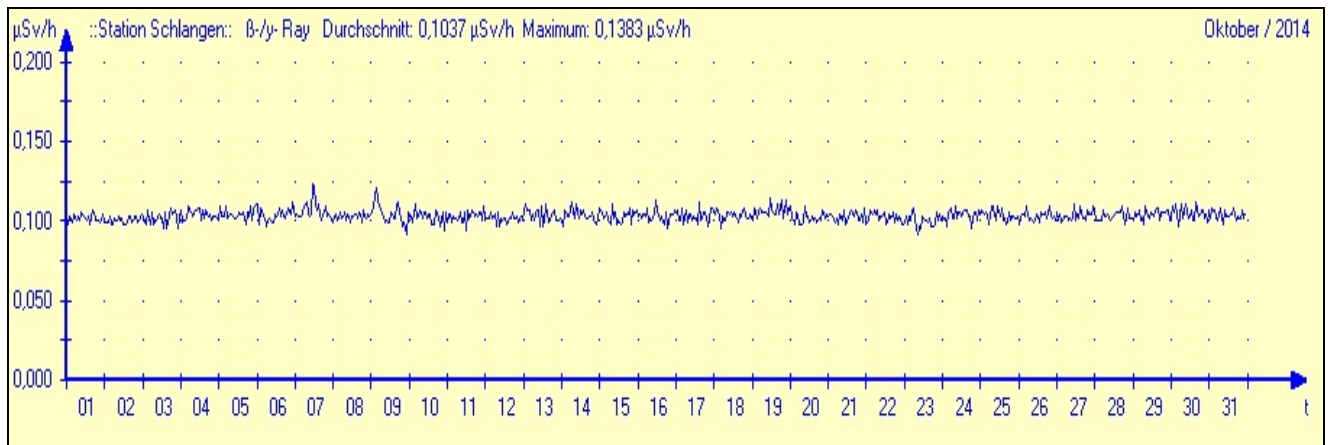


| | % |
|-------|-------|
| 5 Bft | 0,29 |
| 4 Bft | 4,27 |
| 3 Bft | 13,80 |
| 2 Bft | 23,19 |
| 1 Bft | 13,31 |
| 0 Bft | 45,14 |

4493 Werte - Ø 5,8km/h - Max. 36,2km/h - 4354.0 km

© WsWin32 - © Bernhard Kilmann - Schlangen, südl. Teutoburger Wald

Radioaktivität: Gamma-Ortsdosierleistung



| 01.11.2014 | Durchschnitt | Temp. | MinWert | MaxWert | ØMinWert | ØMaxWert | Eistage | Frosttage | Kalte Tage | Sommertage | Heiße Tage | Warme Tage | |
|---------------|--------------|--------------|-------------|-------------|------------|-------------|------------|------------|-------------|--------------|--------------|---------------|---------------|
| 2014 | Temp. °C | STDV | Temp. °C | Temp. °C | Temp. °C | Temp. °C | Tmax < 0°C | Tmin < 0°C | Tmax < 10°C | Tmax >= 25°C | Tmax >= 30°C | Tmin <= 0.0°C | Tmax >= 0.0°C |
| Januar | 3.51 | +2.61 | -4.1 | 12.1 | 0.9 | 5.9 | 1 | 11 | 28 | 0 | 0 | 12 | 30 |
| Februar | 5.09 | +3.49 | -2.7 | 13.6 | 1.6 | 8.8 | 0 | 6 | 21 | 0 | 0 | 6 | 28 |
| März | 7.59 | +3.29 | -2.5 | 21.4 | 2.2 | 13.5 | 0 | 8 | 10 | 0 | 0 | 9 | 31 |
| April | 11.82 | +3.92 | -2.5 | 23.7 | 6.7 | 17.5 | 0 | 1 | 2 | 0 | 0 | 1 | 30 |
| Mai | 13.02 | +0.62 | -0.5 | 29.9 | 7.9 | 18.3 | 0 | 1 | 0 | 3 | 0 | 1 | 31 |
| Juni | 15.99 | +0.69 | 5.9 | 32.4 | 10.1 | 21.9 | 0 | 0 | 0 | 6 | 4 | 0 | 30 |
| Juli | 20.12 | +3.32 | 6.5 | 34.1 | 14.7 | 26.1 | 0 | 0 | 0 | 19 | 4 | 0 | 31 |
| August | 16.28 | -0.42 | 5.0 | 29.1 | 11.3 | 21.9 | 0 | 0 | 0 | 7 | 0 | 0 | 31 |
| September | 15.62 | +1.82 | 6.5 | 27.6 | 11.3 | 20.1 | 0 | 0 | 0 | 2 | 0 | 0 | 30 |
| Oktober | 12.61 | +2.51 | 0.2 | 22.9 | 9.0 | 16.5 | 0 | 0 | 1 | 0 | 0 | 0 | 31 |
| November | | | | | | | | | | | | | |
| Dezember | | | | | | | | | | | | | |
| Gesamt | 12.20 | +3.30 | -4.1 | 34.1 | 7.6 | 17.1 | 1 | 27 | 63 | 37 | 8 | 29 | 304 |

STDV Daten B.Lippspringe 1961 bis 1990 © Bernhard Kilmann

| 01.11.2014 | Regen | Regen | Regen | Tage | Tage | Tage | ET | WindVerlauf | Sonne | Sonne |
|---------------|--------------|---------------|--------------|------------|-----------|-----------|----------------|---------------|----------------|--------------|
| 2014 | l/m² | STDV | % STDV | >0.0l/m² | >2.0l/m² | >20.0l/m² | l/m² | km/24 | Stunden | % STDV |
| Januar | 50.4 | -29.2 | 63.3% | 19 | 10 | 0 | 15.247 | 281.7 | 52:31 | 120.2% |
| Februar | 37.9 | -17.5 | 68.4% | 18 | 10 | 0 | 25.767 | 330.5 | 79:36 | 108.6% |
| März | 26.7 | -43.8 | 37.8% | 9 | 5 | 0 | 51.255 | 254.4 | 171:59 | 166.3% |
| April | 35.8 | -30.8 | 53.7% | 13 | 7 | 0 | 74.619 | 187.0 | 137:35 | 93.2% |
| Mai | 129.9 | +51.7 | 166.2% | 19 | 15 | 1 | 86.350 | 210.1 | 174:37 | 89.4% |
| Juni | 68.5 | -21.2 | 76.3% | 15 | 12 | 0 | 97.373 | 162.1 | 169:33 | 90.7% |
| Juli | 93.3 | +4.7 | 105.3% | 14 | 5 | 3 | 122.848 | 180.0 | 226:58 | 124.0% |
| August | 80.6 | -2.3 | 97.2% | 19 | 14 | 0 | 88.589 | 228.7 | 149:01 | 81.1% |
| September | 64.2 | -6.2 | 91.1% | 15 | 9 | 1 | 54.414 | 137.0 | 114:17 | 87.6% |
| Oktober | 80.6 | +21.1 | 135.5% | 18 | 9 | 1 | 37.969 | 181.4 | 101:45 | 94.2% |
| November | 0.6 | -78.8 | 0.8% | 2 | 0 | 0 | 4.179 | 27.6 | 10:00 | 19.3% |
| Dezember | | | | | | | | | | |
| Gesamt | 668.4 | -245.2 | 73.2% | 161 | 96 | 6 | 658.610 | 2180.5 | 1387:52 | 96.0% |

STDV Daten B.Lippspringe 1961 bis 1990 © Bernhard Kilmann