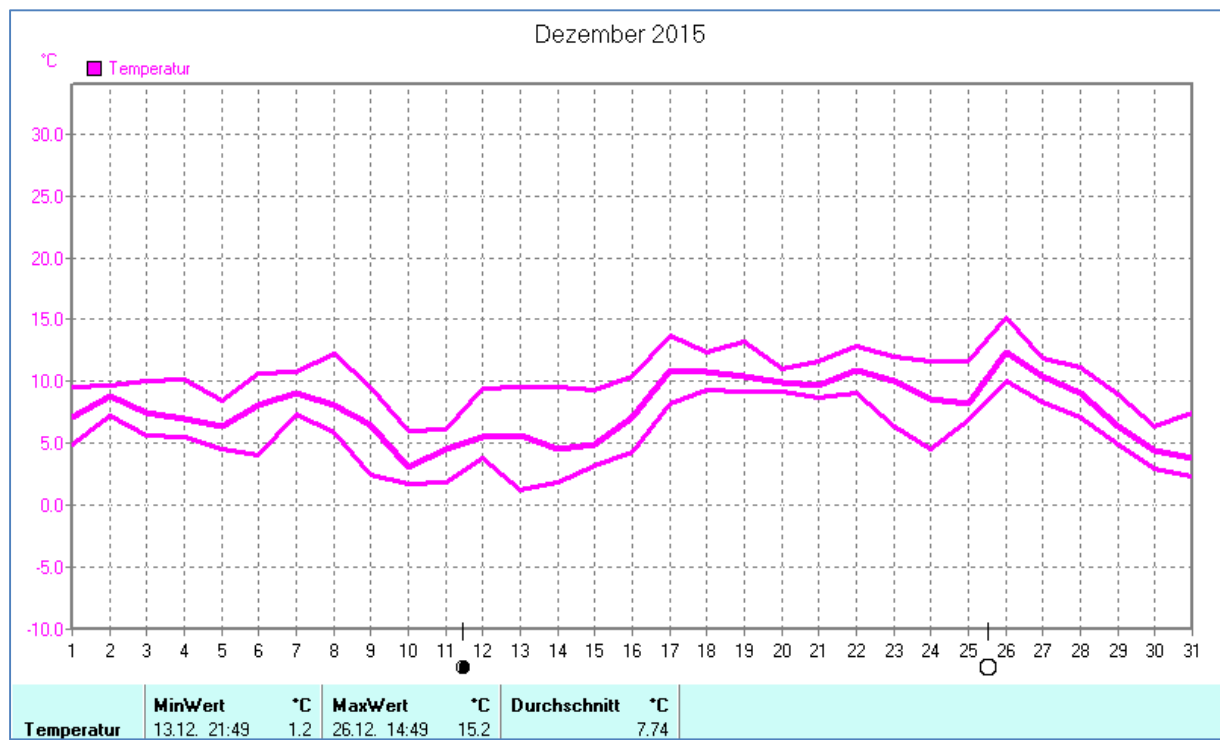
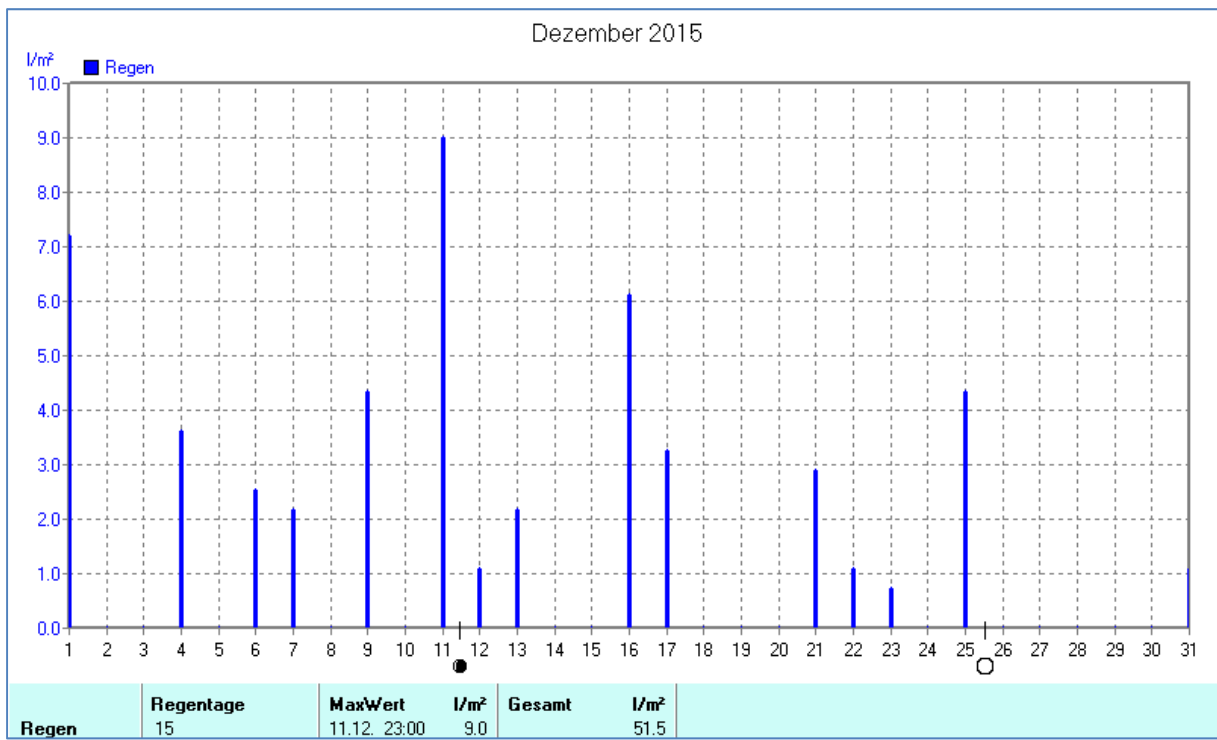
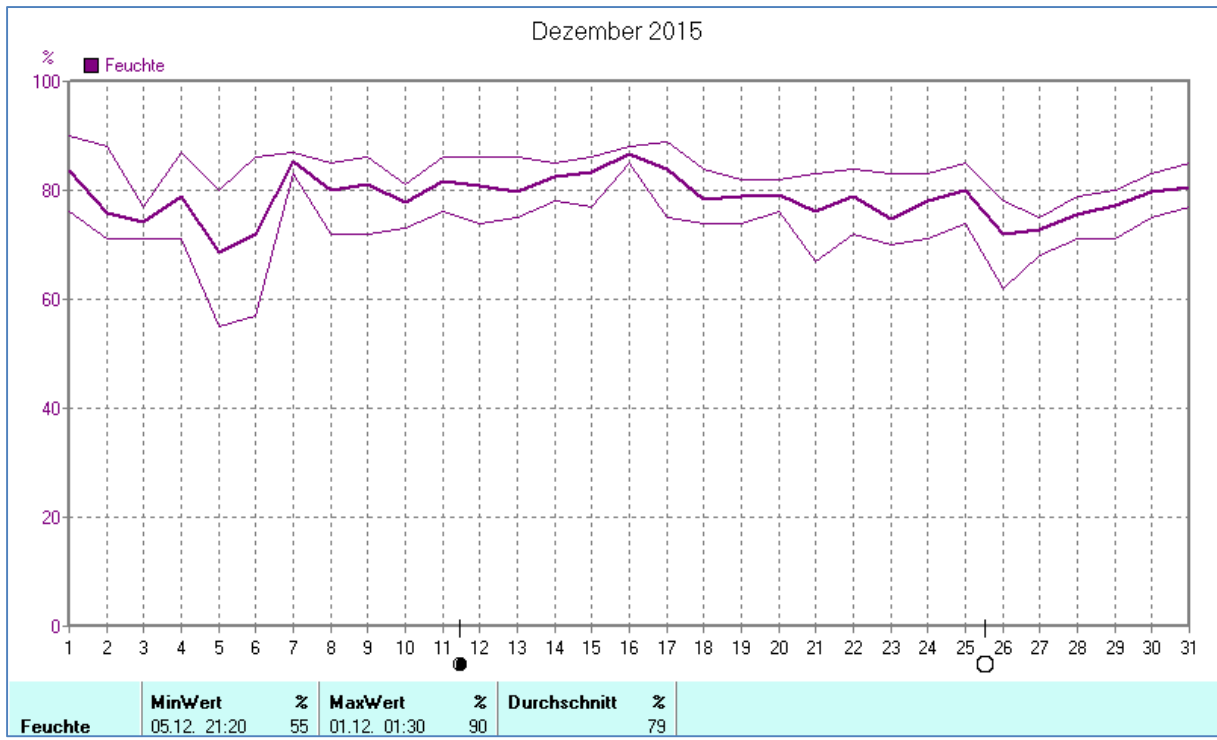
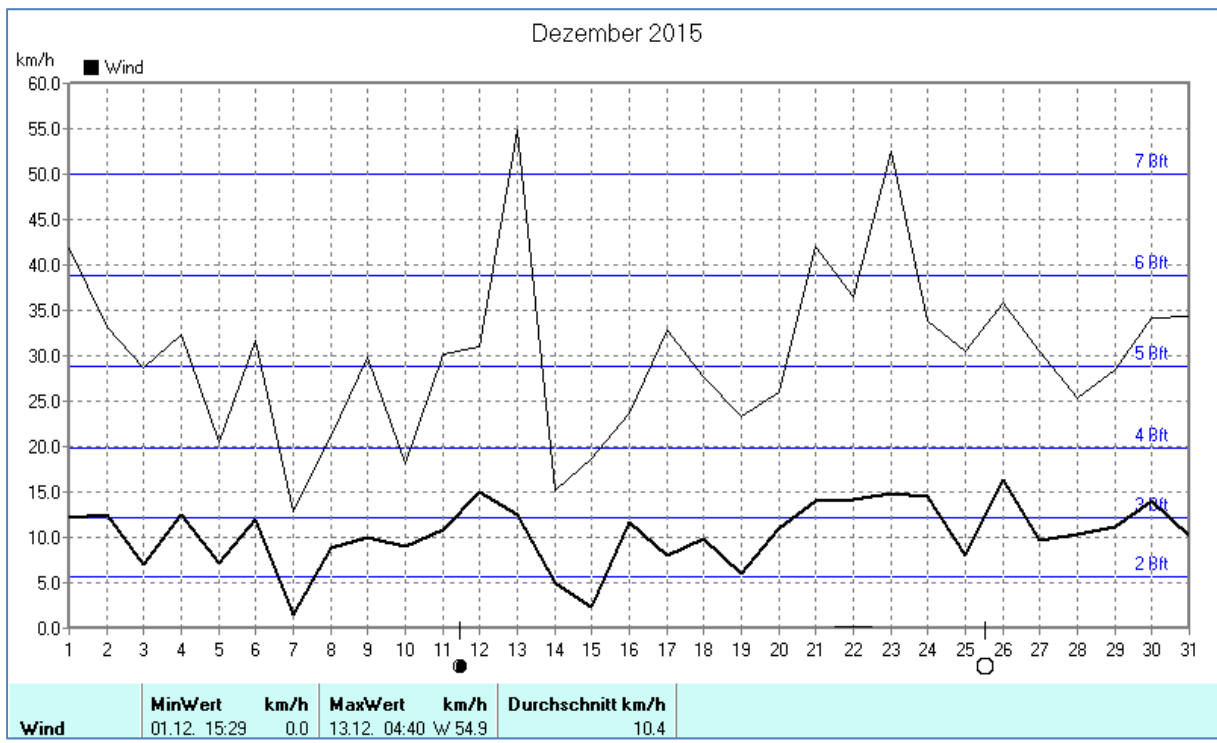
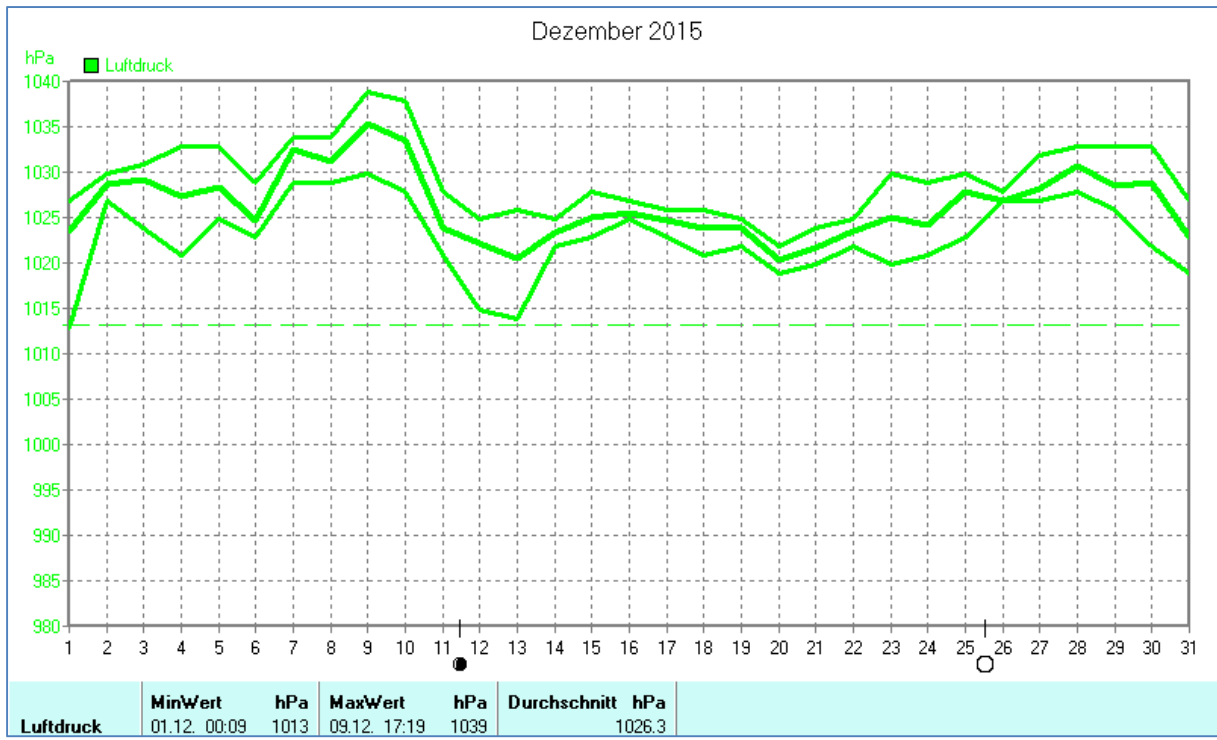


Wettertabelle und Grafiken Dezember 2015 Station Dahl

Wetterdaten Dezember 2015 Station Dahl							
Meßgröße	Minimum	Zeit	Datum	Maximum	Zeit	Datum	Durchschnitt
Temperatur (2m)	1,2 °C	21:49	13.12.2015	15,2 °C	14:49	26.12.2015	7,7 °C
Bodentemperatur (5cm ü.B.)	0,1 °C	21:49	13.12.2015	15,3 °C	13:30	26.12.2015	7,4 °C
Luftfeuchte	55 %	21:20	05.12.2015	90 %	01:30	01.12.2015	79 %
Luftdruck	1013 hPa	00:09	01.12.2015	1039 hPa	17:19	09.12.2015	1026 hPa
Wind km/h				54,9 km/h	04:40	13.12.2015	10,4 km/h
Windrichtung				W	04:40	13.12.2015	W-SW
Regenmenge				9,0 l/m ²	23:00	11.12.2015	#51,480 l/m ²
Sonne h				4:21 h	13:19	08.12.2015	#42:25 h

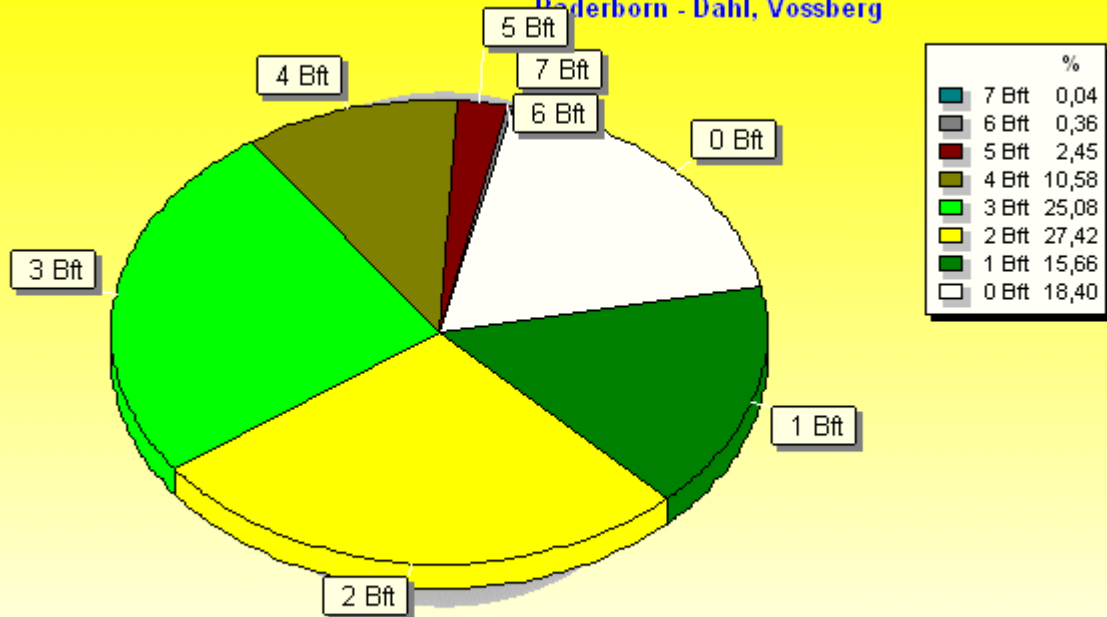






Verteilung Windstärke Dezember 2015

Paderborn - Dahl, Vossberg

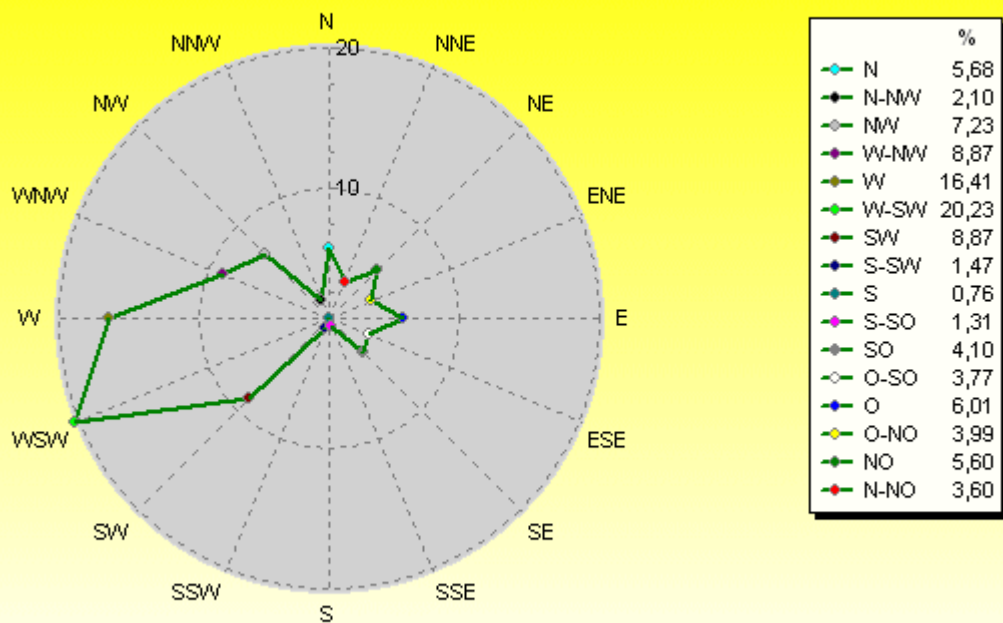


4489 Werte - Ø 10,4km/h - Max. 54,9km/h

© WzWin32

Verteilung Windrichtung Dezember 2015

Paderborn - Dahl, Vossberg



3663 / 826 Werte -> 18.4% Windstille - Ø 10,4km/h - Max. 54,9km/h

© WzWin32

