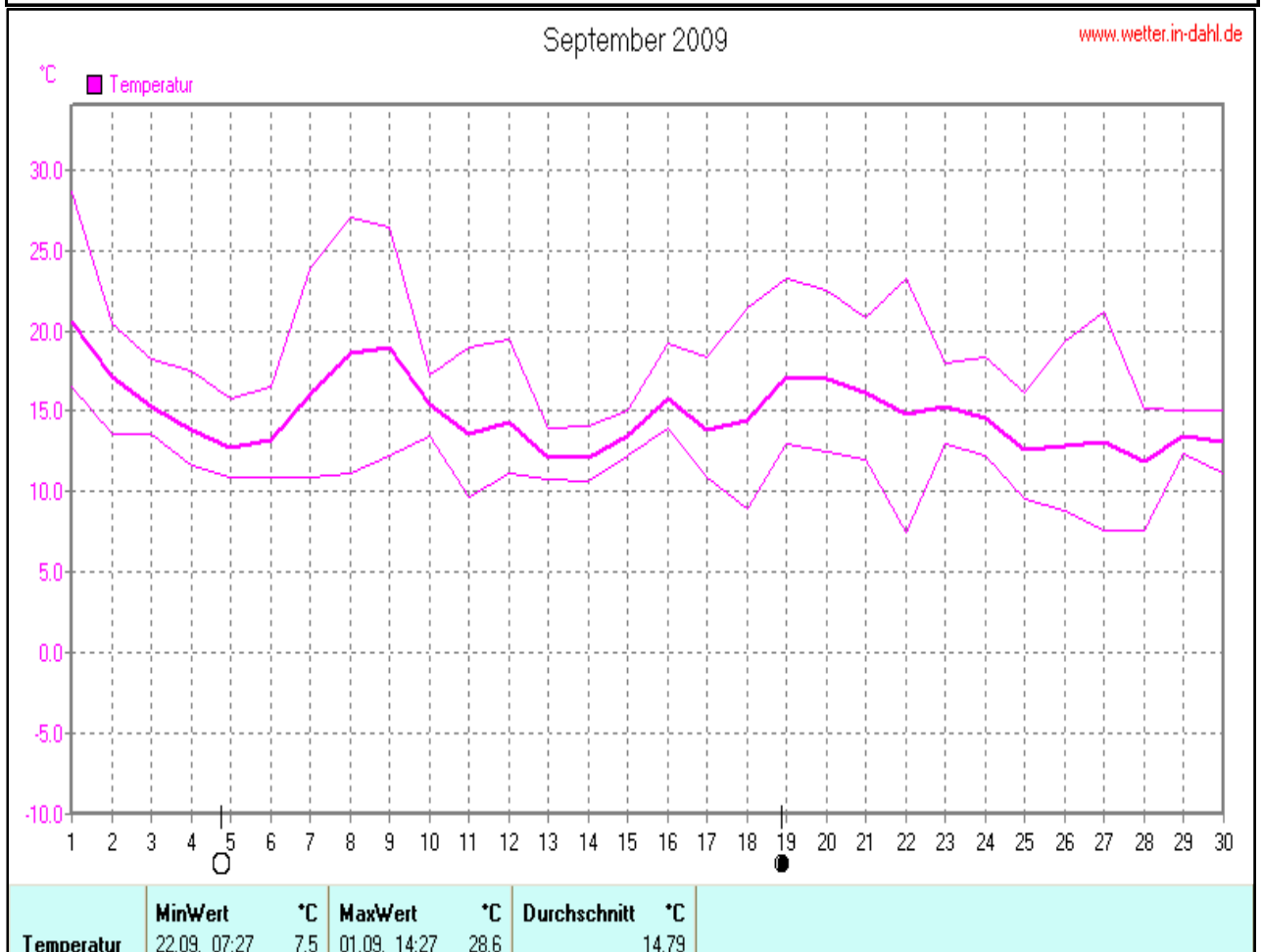


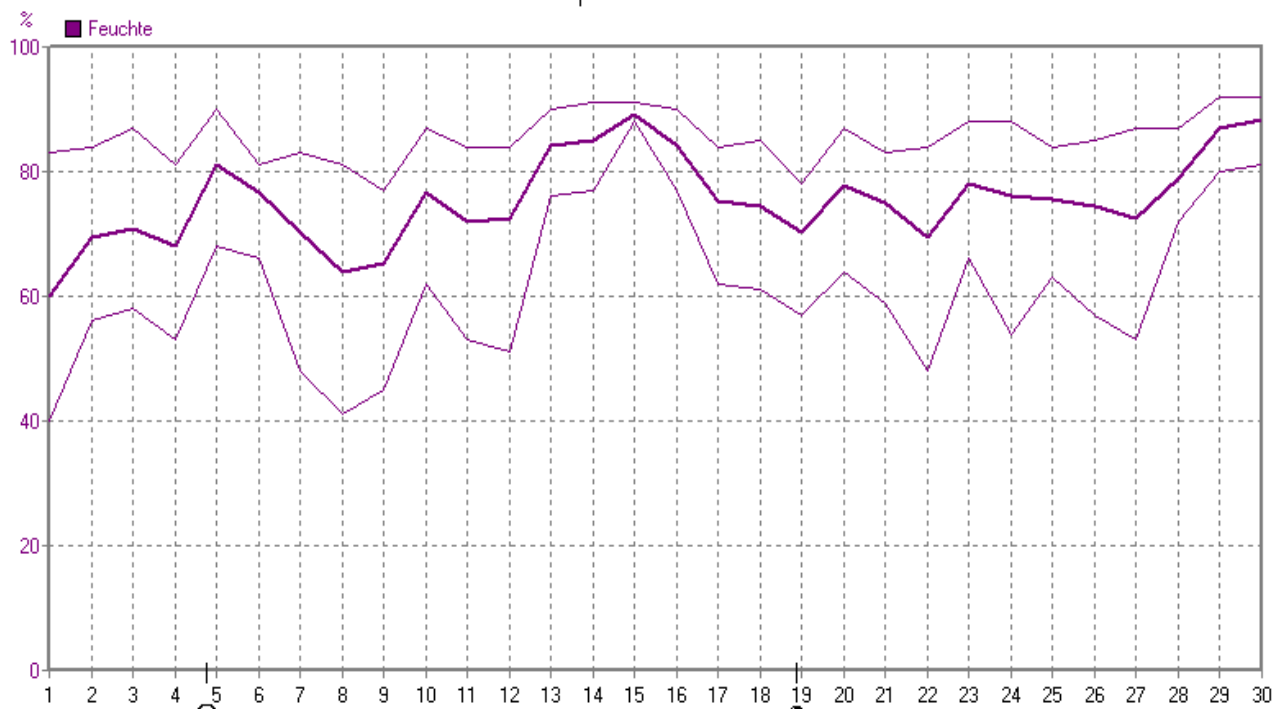
Wettergrafiken und Tabelle September 2009 Station Dahl

Wetterdaten September 2009 Station Dahl

Meßgröße	Minimum	Zeit	Datum	Maximum	Zeit	Datum	Durchschnitt
Temperatur (2m)	7,5 °C	07:27	22.09.2009	28,6 °C	14:27	01.09.2009	14,8 °C
Bodentemp. (5cm ü.B.)	5,9 °C	05:18	28.09.2009	32,1 °C	17:38	08.09.2009	14,6 °C
Luftfeuchte	40%	14:27	01.09.2009	92%	09:18	29.09.2009	75%
Luftdruck	1000 hPa	08:17	03.09.2009	1032 hPa	20:57	10.09.2009	1021 hPa
Windgeschwindigkeit				47,3 km/h	14:57	03.09.2009	9,2 km/h
Windrichtung				S-SO	14:57	03.09.2009	W
Regenmenge				15,3 l/m ²	09:08	15.09.2009	#58,800 l/m ²
Sonnenschein-Zeit				9,98 h	19:18	18.09.2009	#156:46 h

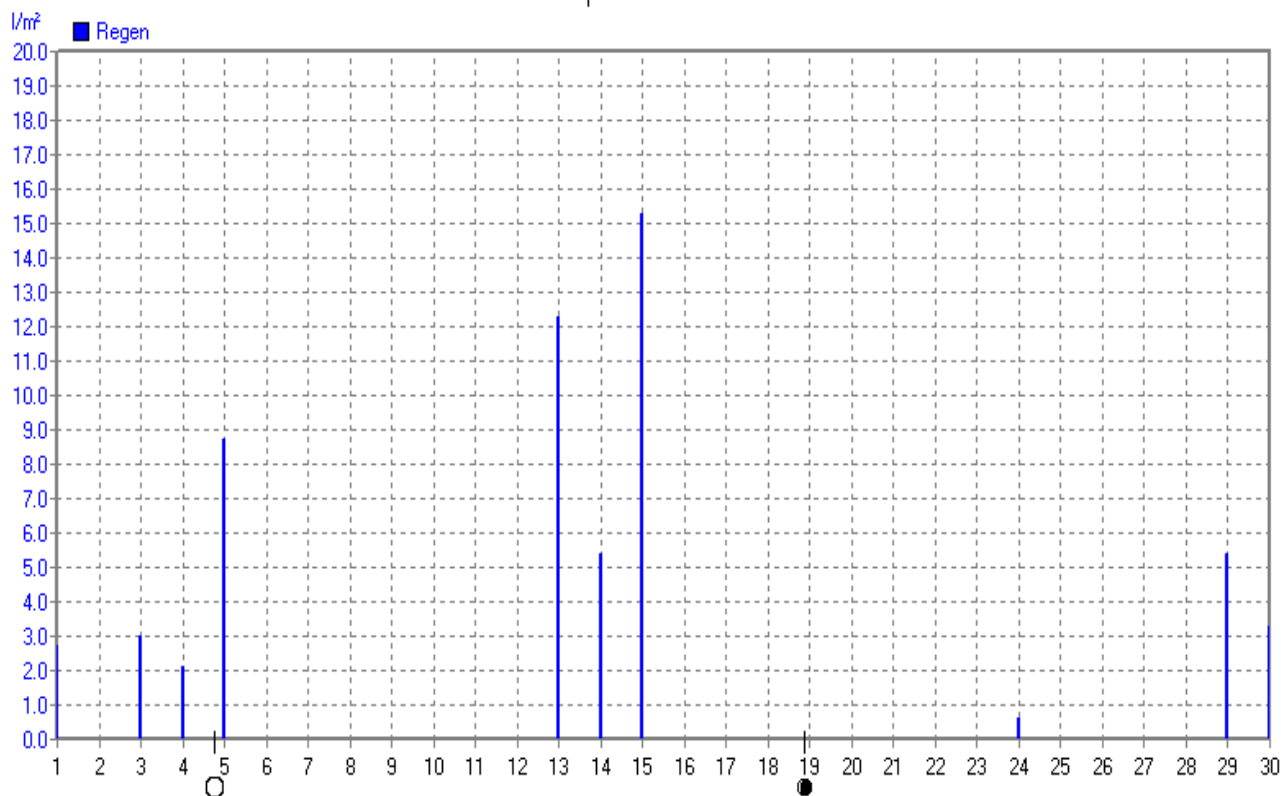


September 2009



Feuchte	MinWert 01.09. 14:27	% 40	MaxWert 29.09. 09:18	% 92	Durchschnitt 75	% 75
----------------	--------------------------------	----------------	--------------------------------	----------------	---------------------------	----------------

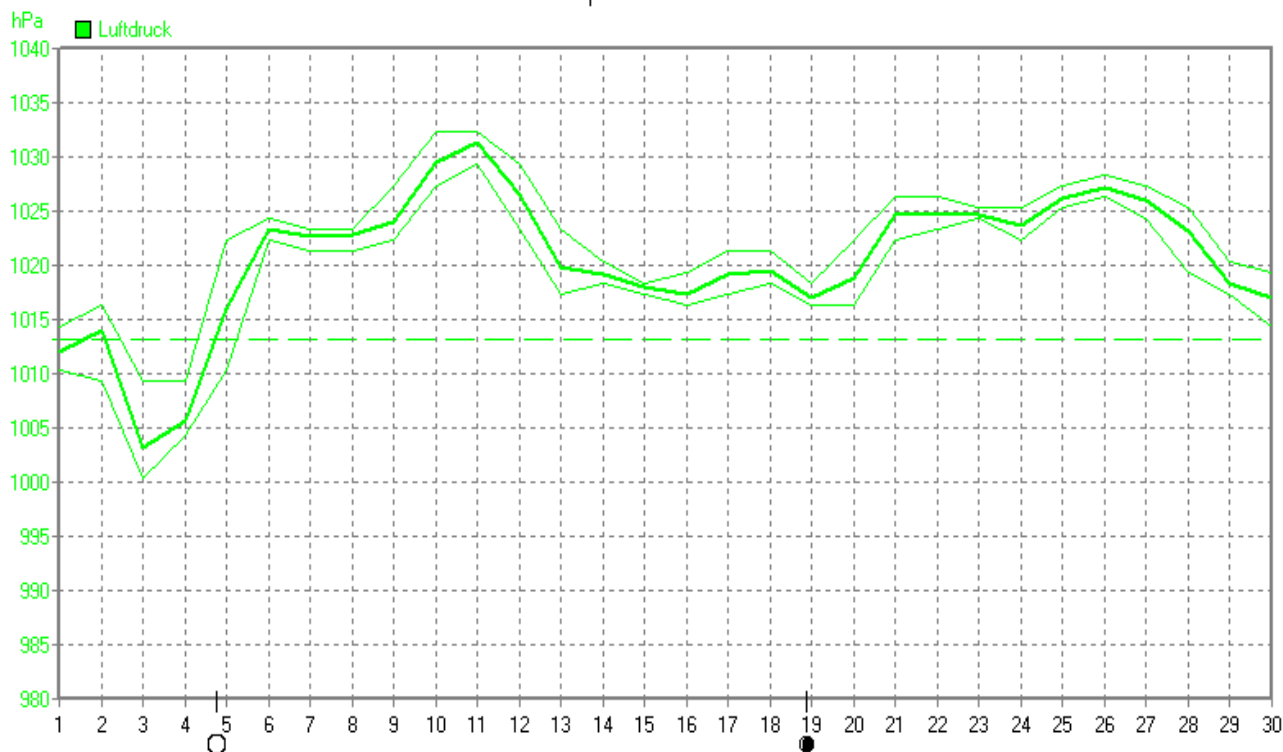
September 2009



Regen	Regentage 10	MaxWert 15.09. 09:08	l/m² 15.3	Gesamt 58.8	l/m² 58.8
--------------	------------------------	--------------------------------	---------------------	-----------------------	---------------------

September 2009

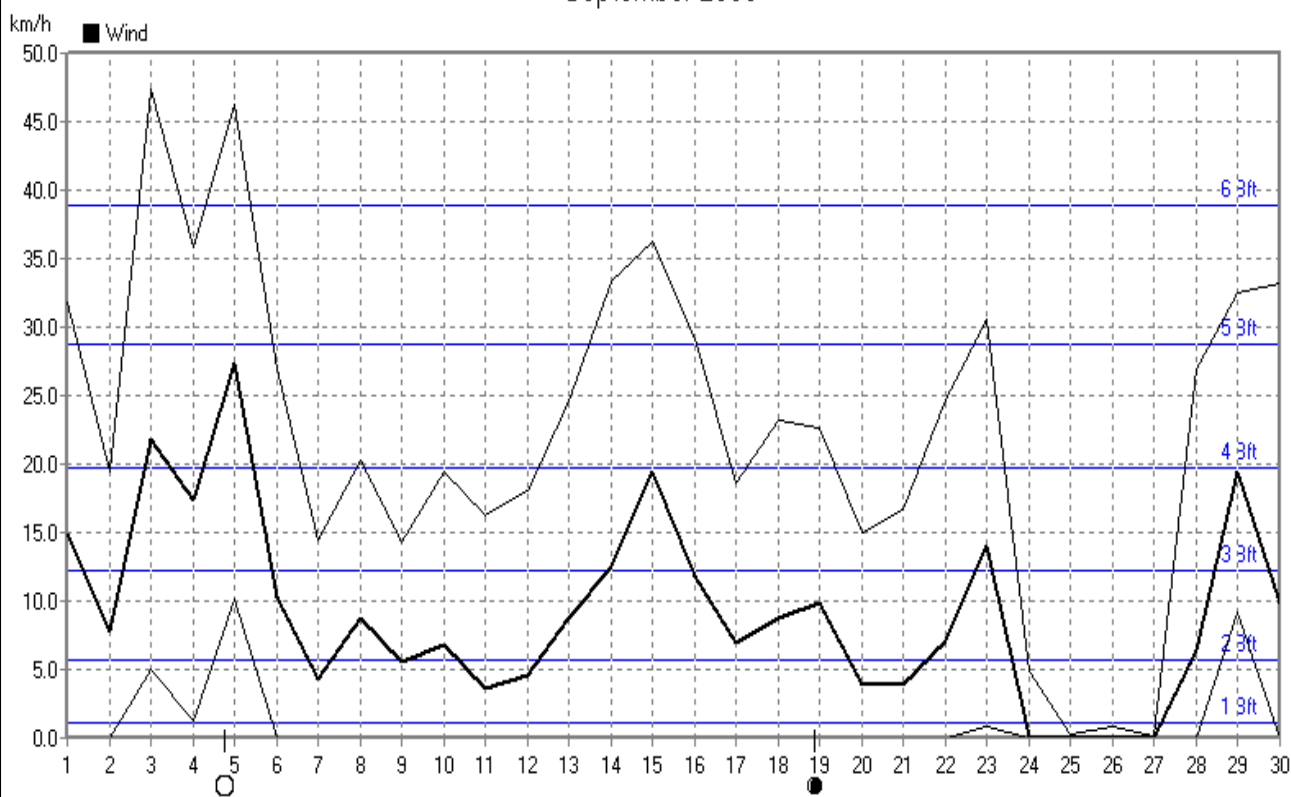
www.wetter.in-dahl.de



Luftdruck	MinWert 03.09. 08:17	hPa 1000	MaxWert 10.09. 20:57	hPa 1032	Durchschnitt hPa 1020.5
------------------	--------------------------------	--------------------	--------------------------------	--------------------	-----------------------------------

September 2009

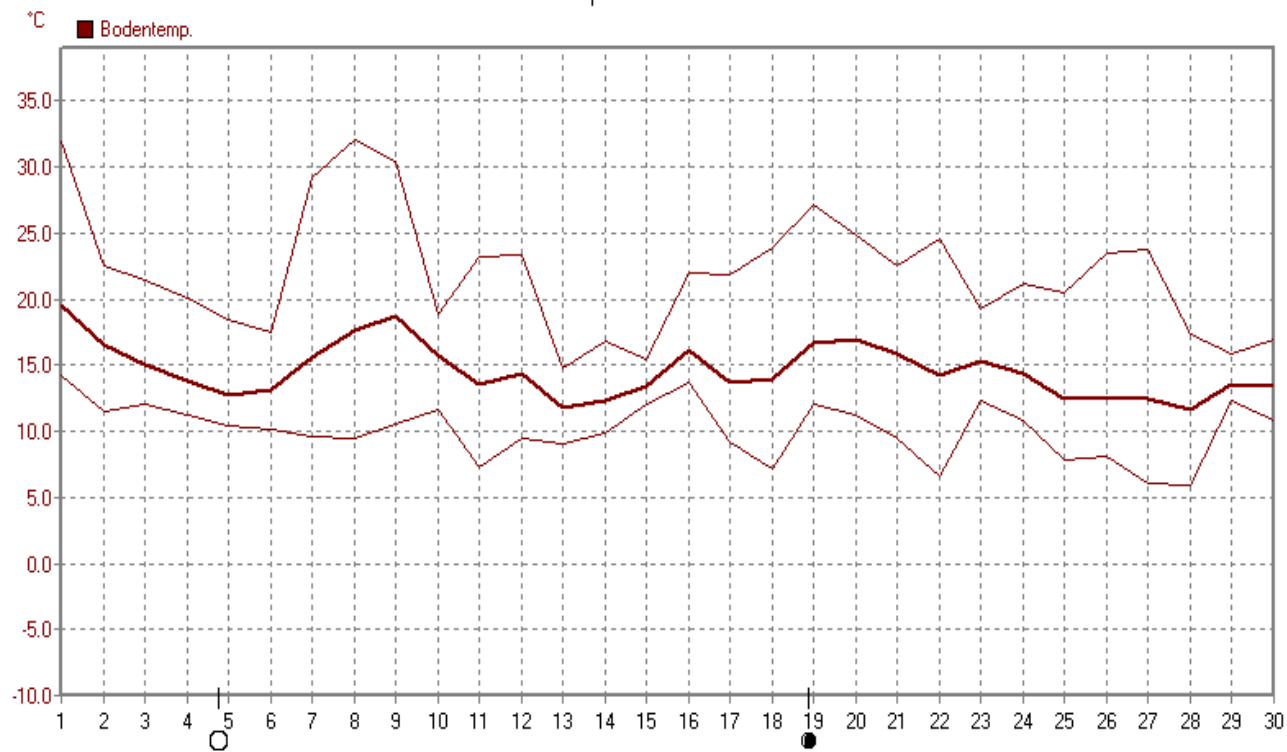
www.wetter.in-dahl.de



Wind	MinWert 01.09. 18:57	km/h 0.0	MaxWert 03.09. 14:57-50	km/h 47.3	Durchschnitt km/h 9.2
-------------	--------------------------------	--------------------	-----------------------------------	---------------------	---------------------------------

September 2009

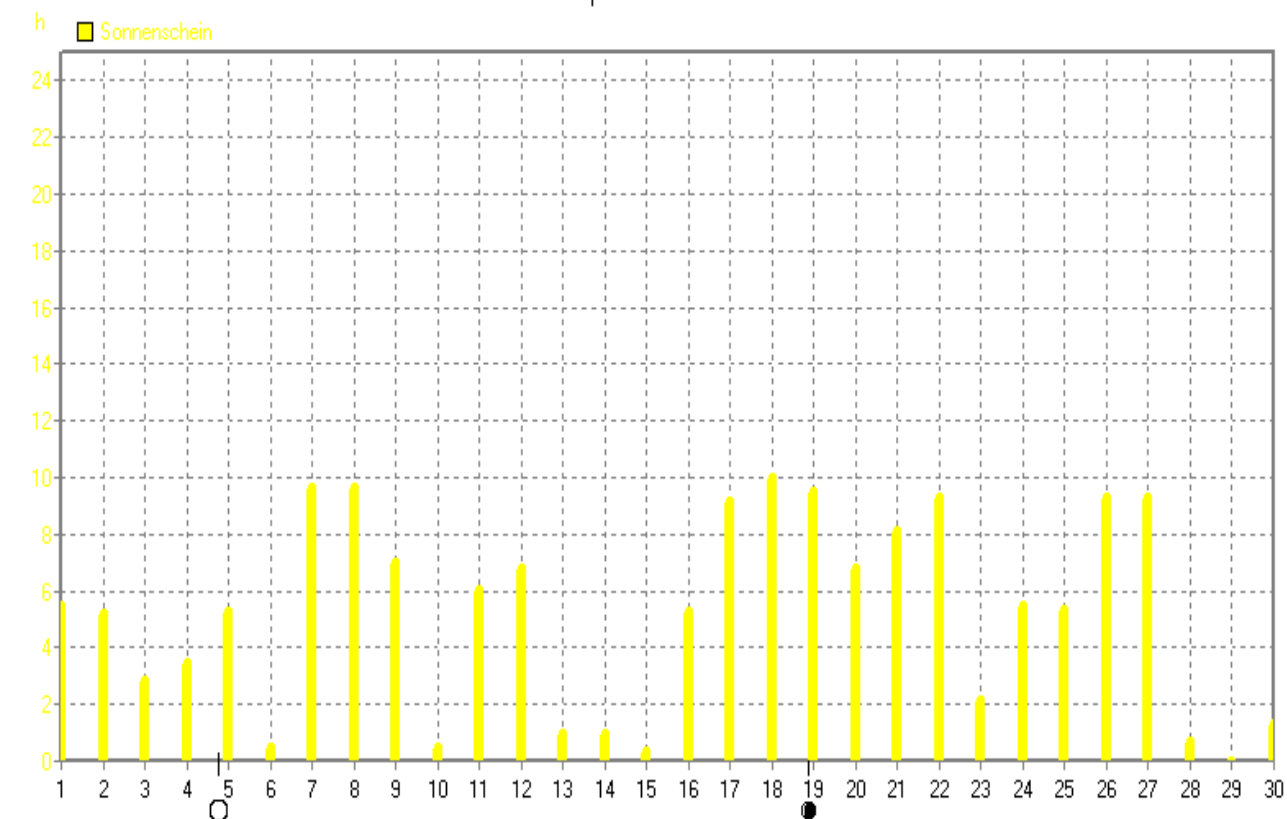
www.wetter.in-dahl.de



Bodentemp.	MinWert	°C	MaxWert	°C	Durchschnitt	°C
	28.09. 05:18	5.9	08.09. 17:38	32.1	14.58	

September 2009

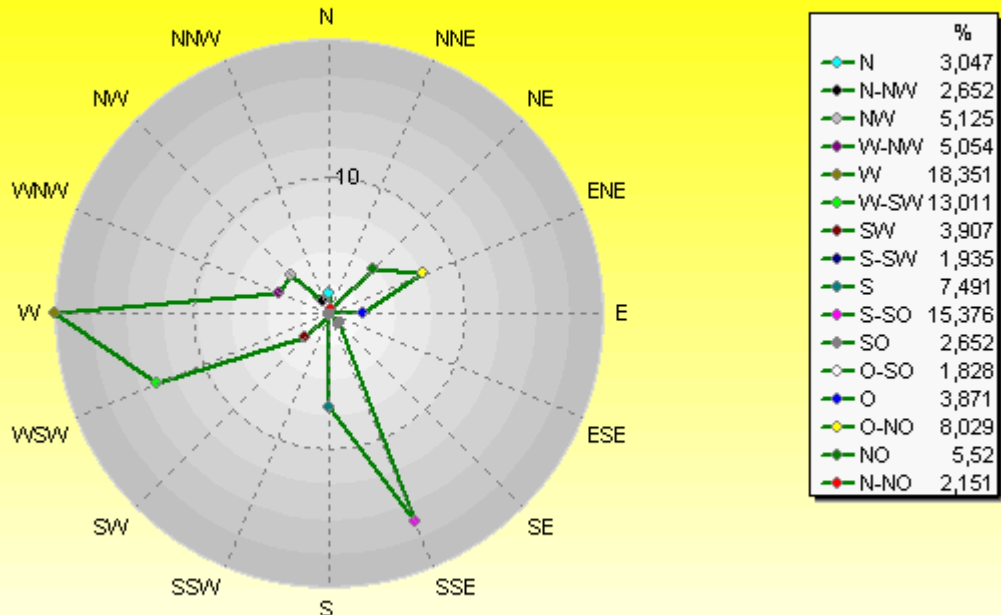
www.wetter.in-dahl.de



Sonnenschein	MaxWert	h	Durchschnitt	h
	18.09. 19:18	9.98	156.46 h	5.2

Verteilung Windrichtung September 2009

Paderborn - Dahl, Vossberg

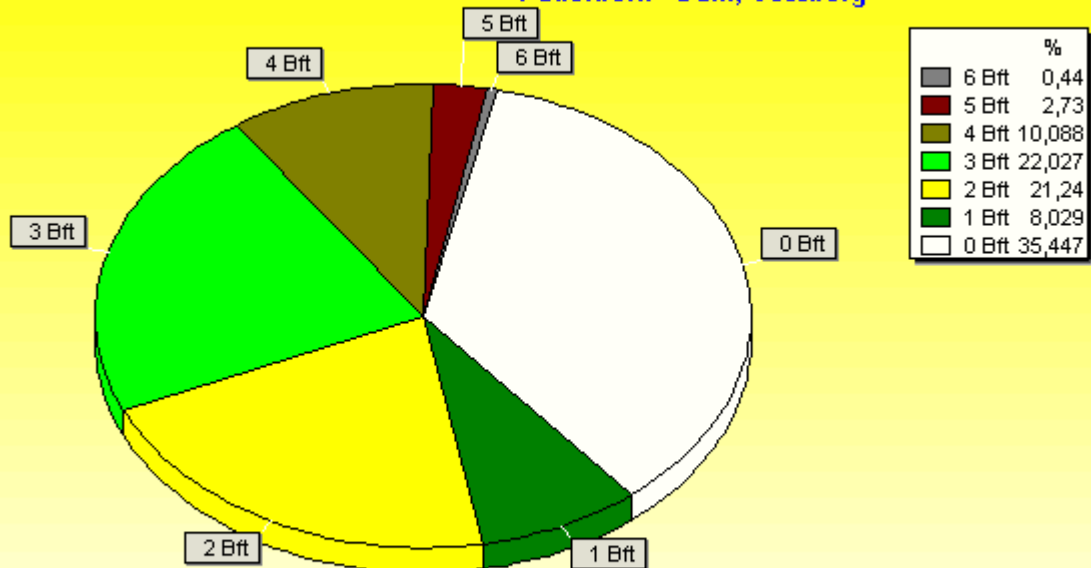


2790 / 1532 Werte -> 35.4% Windstille - Ø 9,2km/h - Max. 47,3km/h

© WzWin32

Verteilung Windstärke September 2009

Paderborn - Dahl, Vossberg



4322 Werte - Ø 9,2km/h - Max. 47,3km/h

© WzWin32