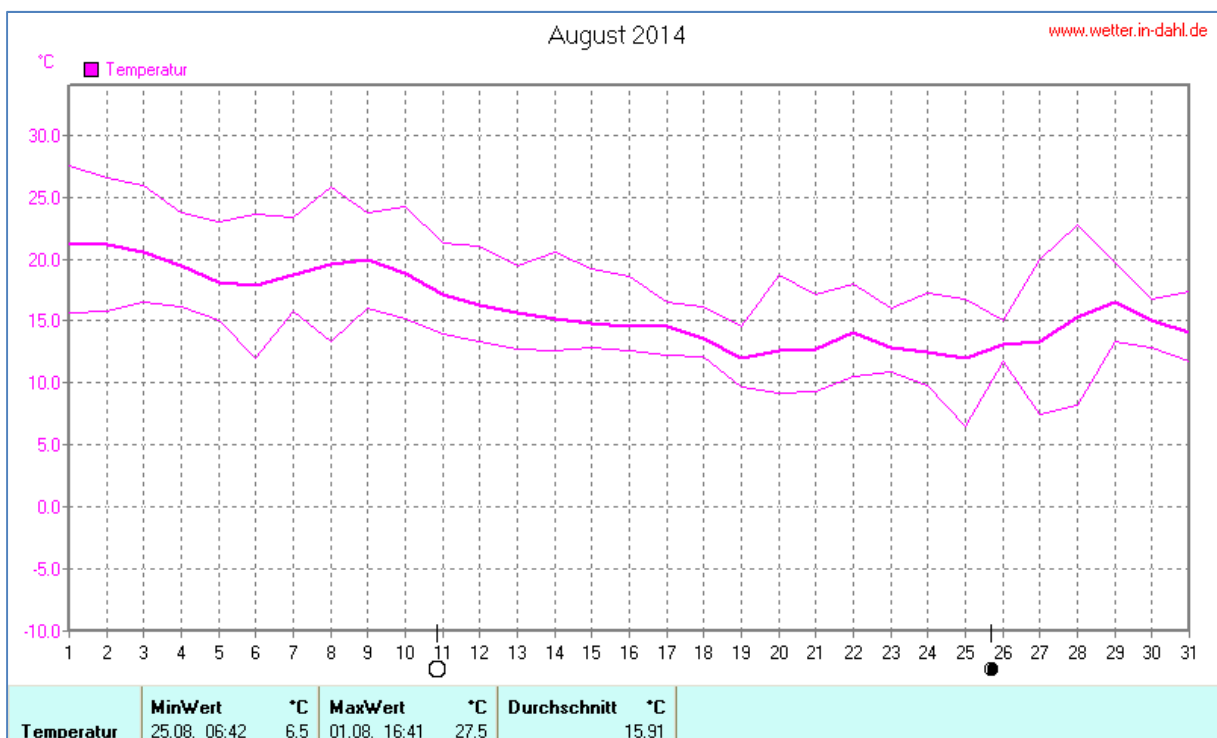
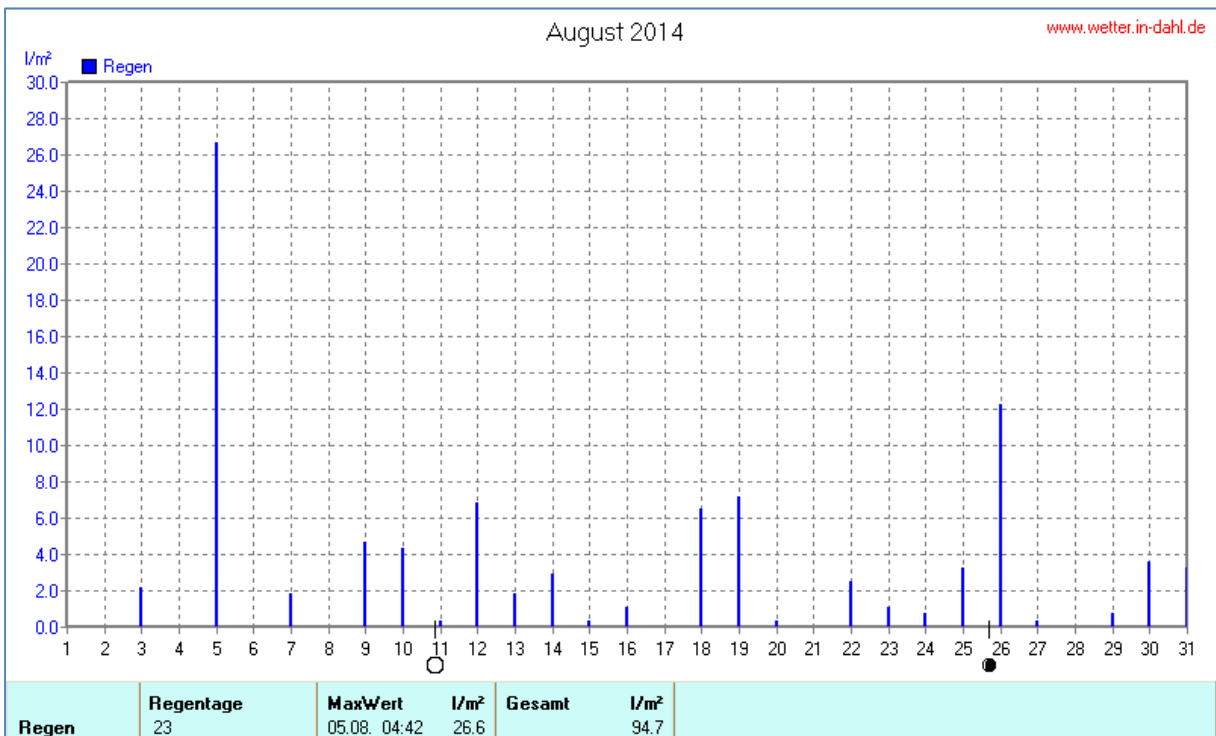
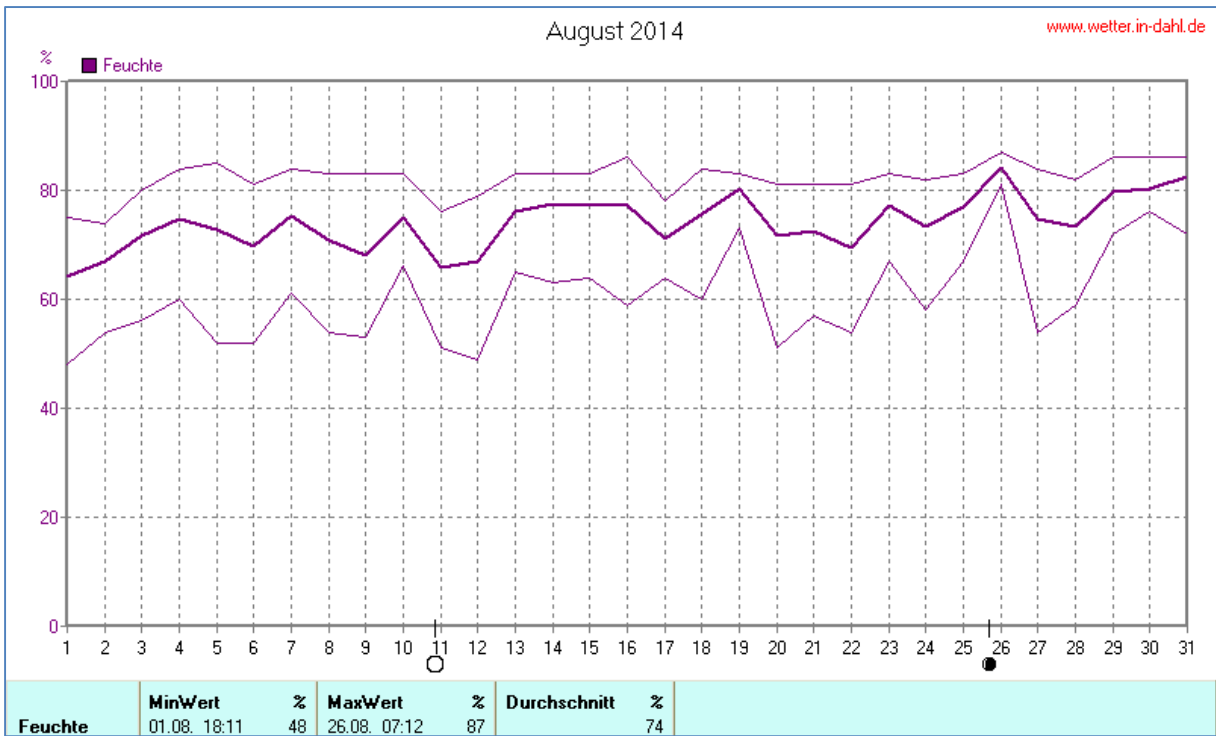
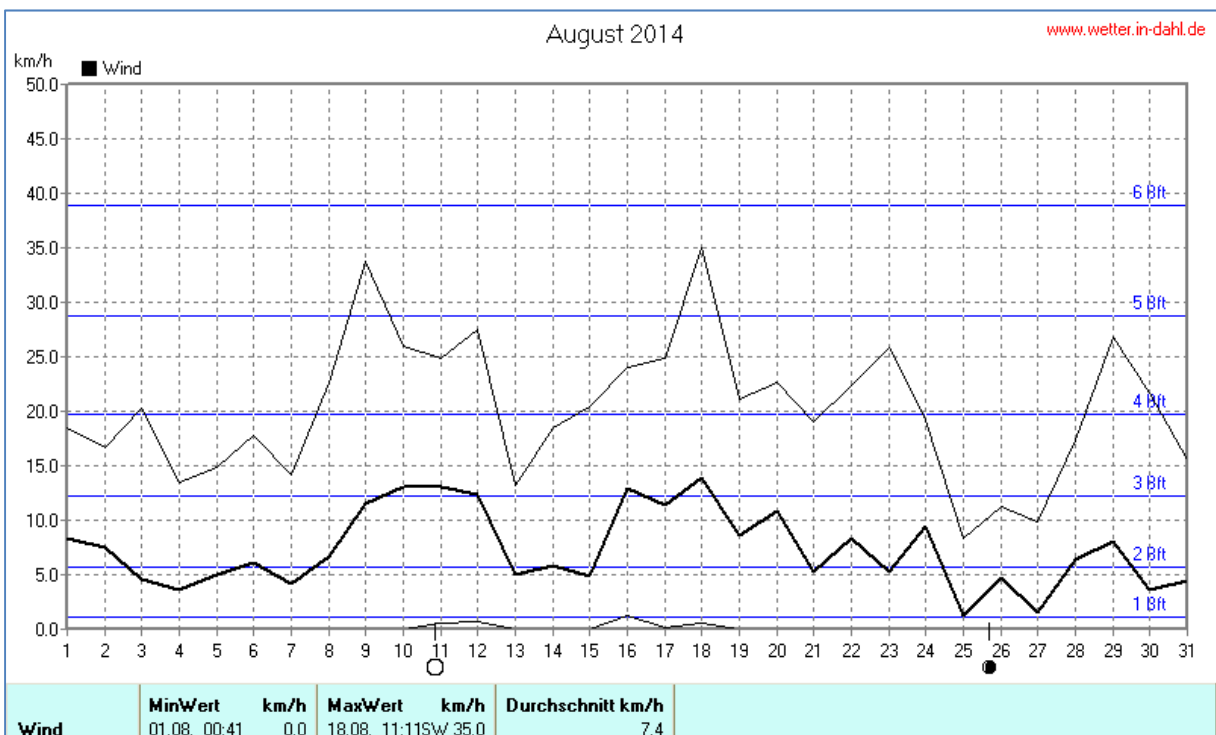
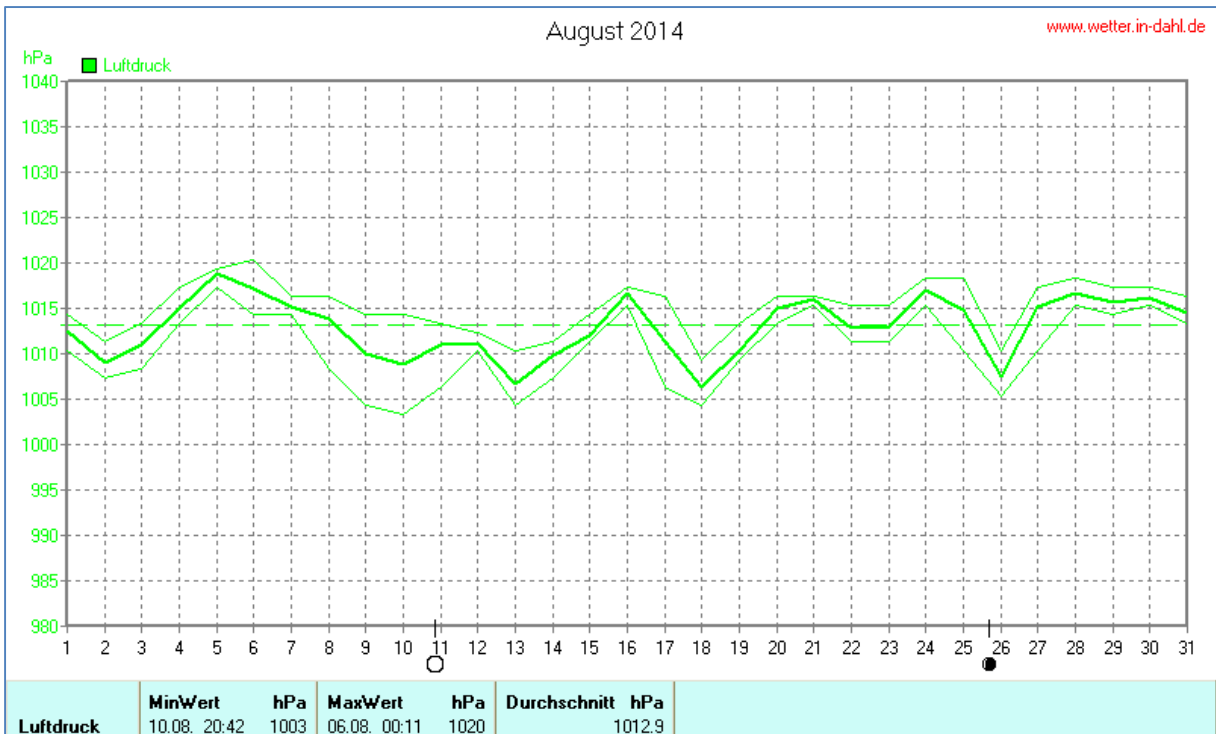


Wettertabelle und Grafiken August 2014 Station Dahl

| Wetterdaten August 2014 Station Dahl | | | | | | | |
|---|----------|-------|------------|-----------------------|-------|------------|--------------------------|
| Meßgröße | Minimum | Zeit | Datum | Maximum | Zeit | Datum | Durchschnitt |
| Temperatur | 6,5 °C | 06:42 | 25.08.2014 | 27,5 °C | 16:41 | 01.08.2014 | 15,9 °C |
| Bodentemp. | 5,9 °C | 05:42 | 25.08.2014 | 38,7 °C | 18:11 | 01.08.2014 | 16,5 °C |
| Luftfeuchte | 48 % | 18:11 | 01.08.2014 | 87 % | 07:12 | 26.08.2014 | 74 % |
| Luftdruck | 1003 hPa | 20:42 | 10.08.2014 | 1020 hPa | 00:11 | 06.08.2014 | 1013 hPa |
| Wind km/h | | | | 35,0 km/h | 11:11 | 18.08.2014 | 7,4 km/h |
| Wind ° | | | | W-SW | 11:11 | 18.08.2014 | S-SO |
| Regen l/m ² | | | | 26,6 l/m ² | 04:42 | 05.08.2014 | #94,680 l/m ² |
| Sonne h | | | | 12:29 h | 20:41 | 01.08.2014 | #195:37 h |

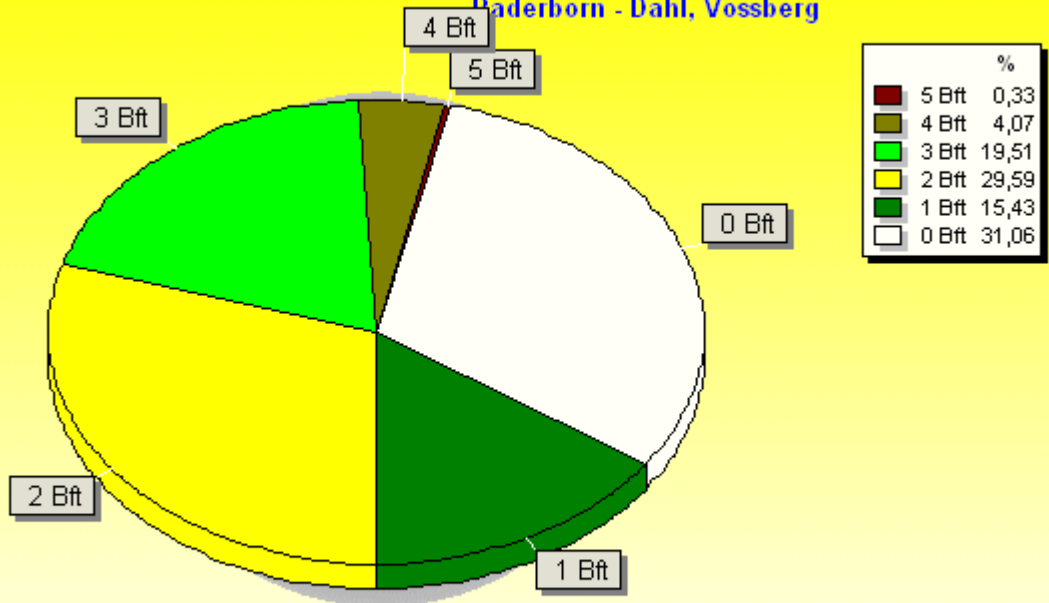






Verteilung Windstärke August 2014

Paderborn - Dahl, Vossberg

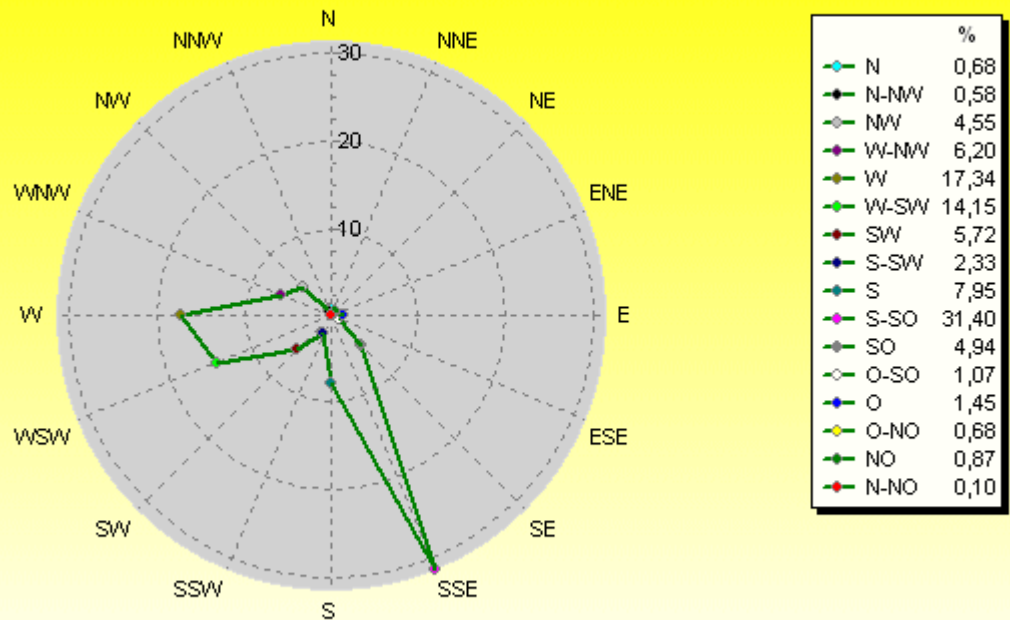


1497 Werte - Ø 7,4km/h - Max. 35,0km/h

© WzWin32

Verteilung Windrichtung August 2014

Paderborn - Dahl, Vossberg



1032 / 465 Werte -> 31.1% Windstille - Ø 7,4km/h - Max. 35,0km/h

© WzWin32

