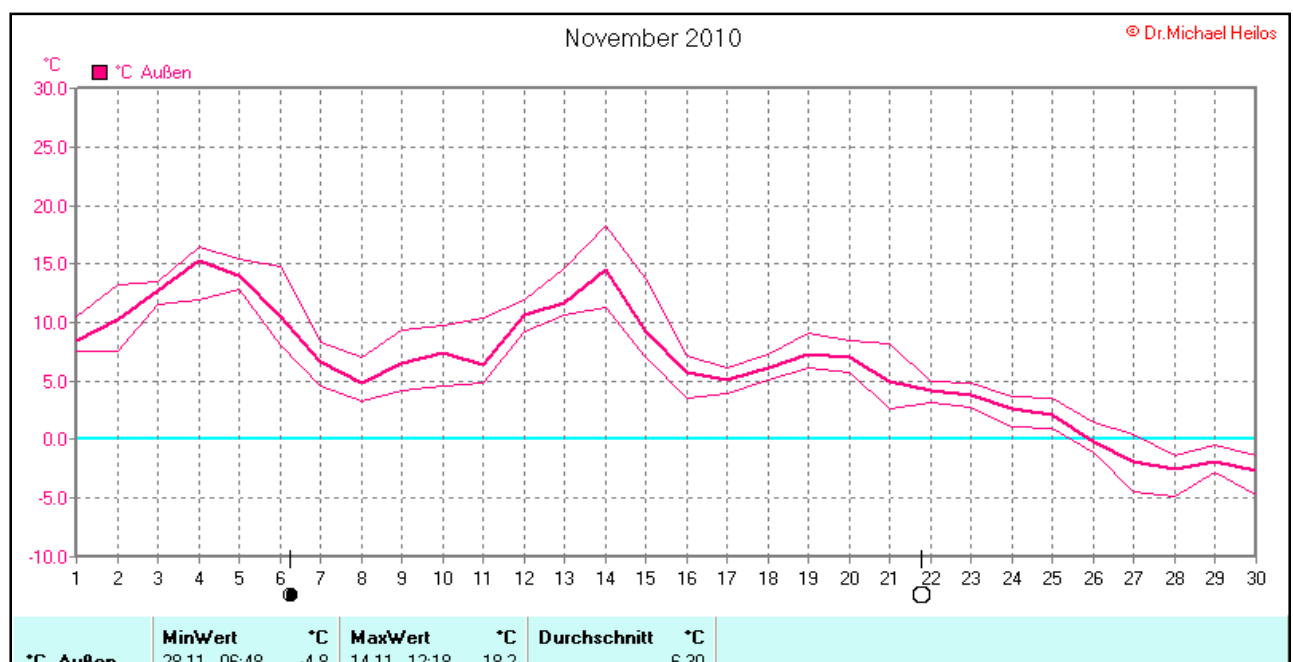
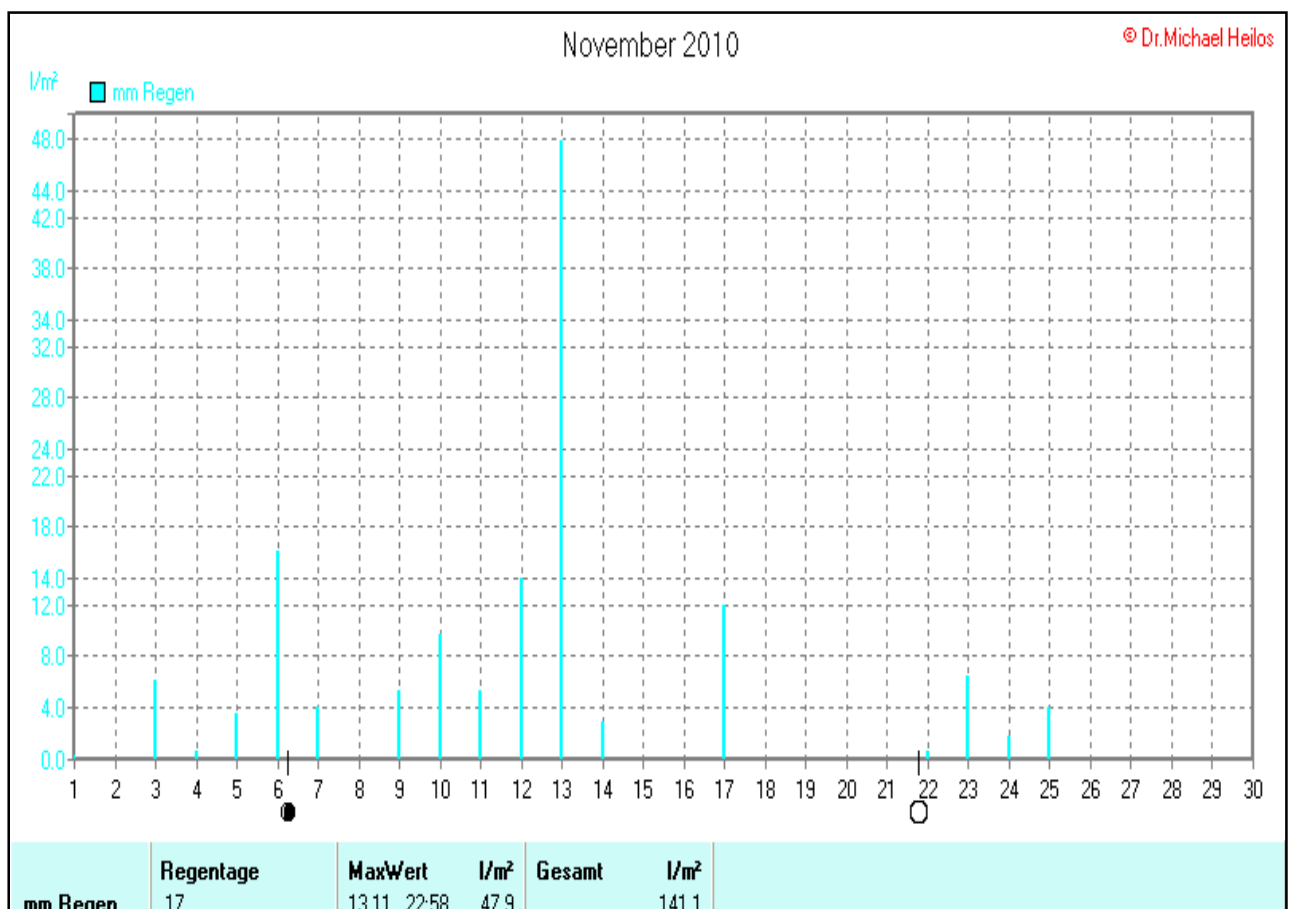
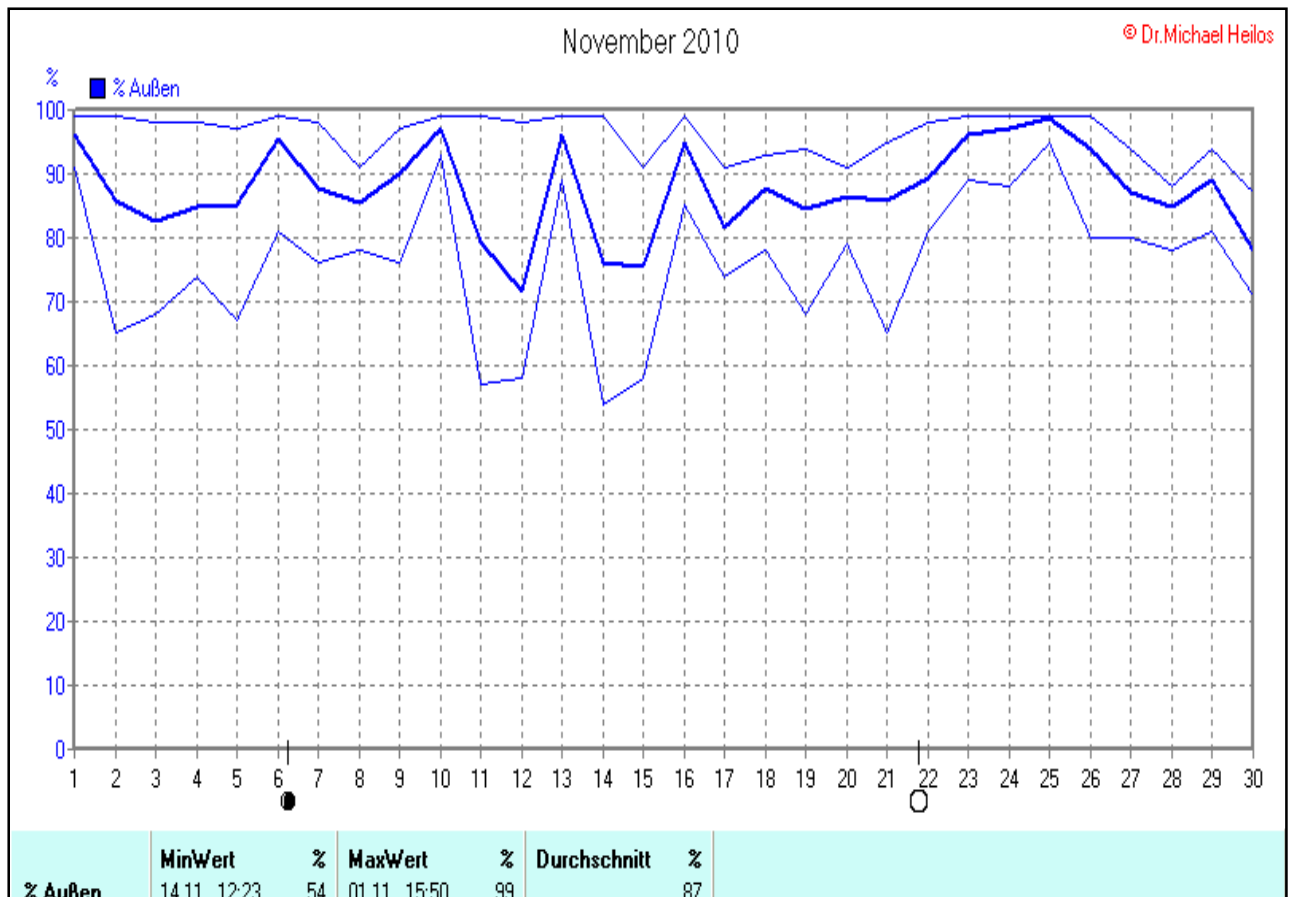


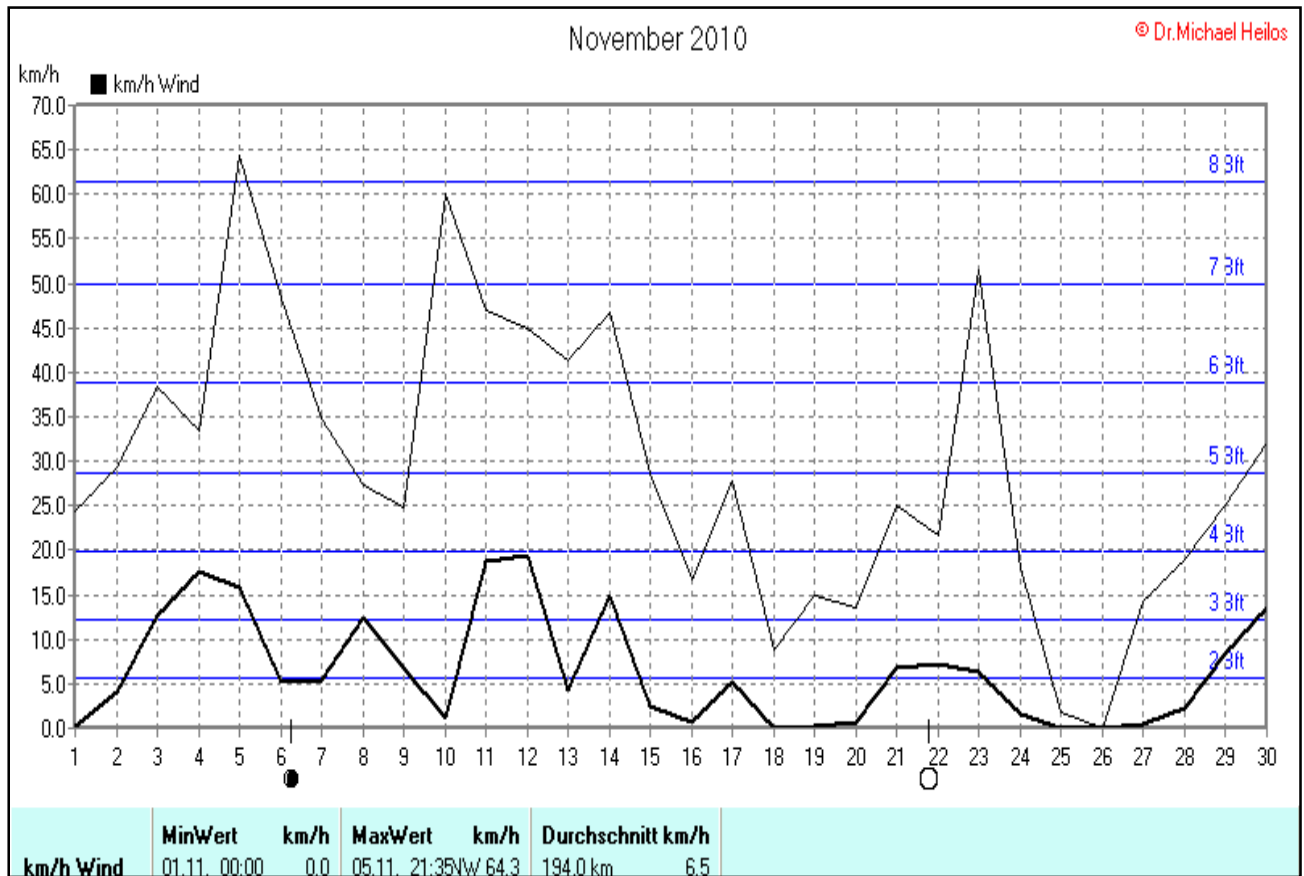
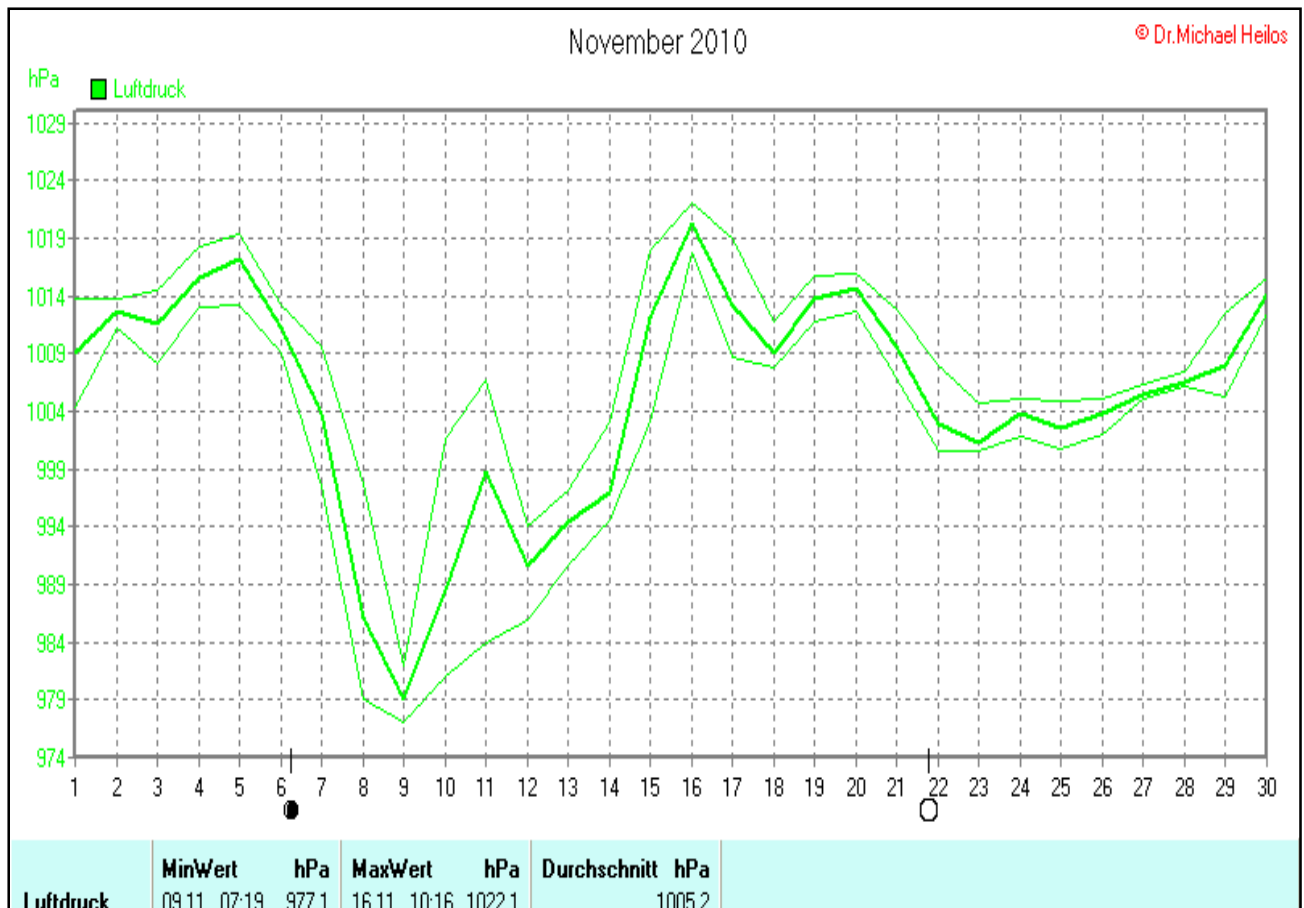
Wettertabelle und Grafiken November 2010 Station Borchten

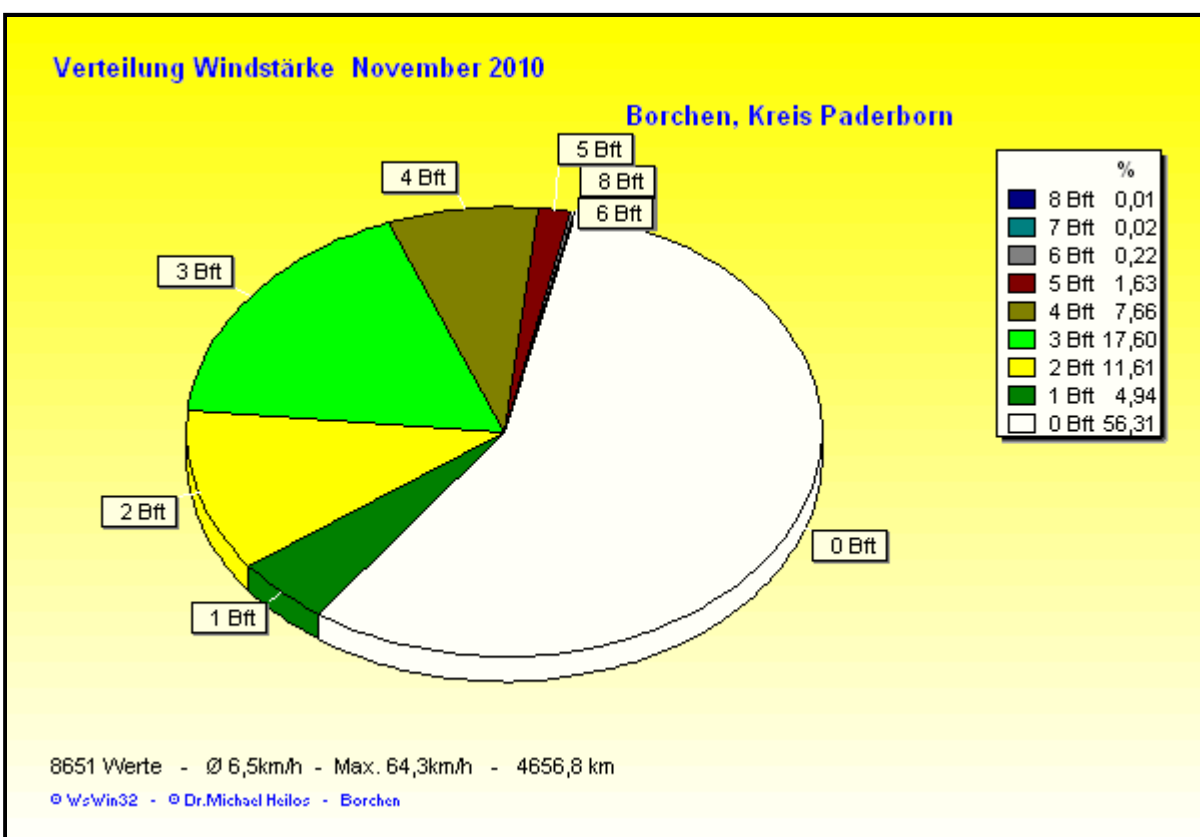
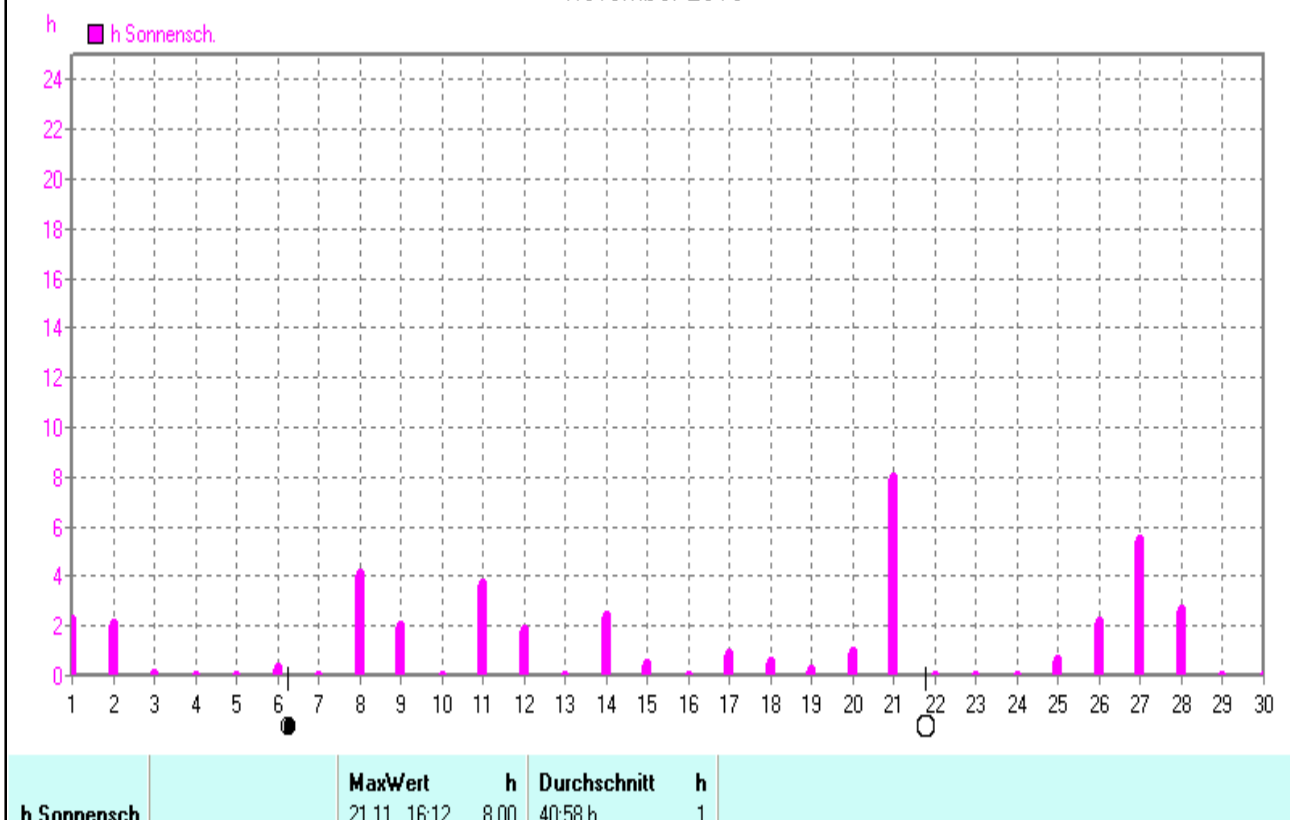
Wetterdaten November 2010 Station Borchten

Meßgröße	Minimum	Zeit	Datum	Maximum	Zeit	Datum	Durchschnitt
Temperatur Außen	-4,8 °C	06:48	28.11.2010	18,2 °C	12:18	14.11.2010	6,3 °C
Taupunkt	-9,1 °C	23:58	30.11.2010	13,9 °C	06:00	04.11.2010	4,3 °C
Windchill	-20,3 °C	22:59	30.11.2010	15,8 °C	17:04	14.11.2010	4,3 °C
Luftfeuchte Außen	54%	12:23	14.11.2010	99%	15:50	01.11.2010	87%
Luftdruck	977,1 hPa	07:19	09.11.2010	1022,1 hPa	10:16	16.11.2010	1005,2 hPa
Windgeschwindigkeit				64,3 km/h	21:35	05.11.2010	6,5 km/h
Windrichtung				N-NW	21:35	05.11.2010	N-NW
Wind Verlauf							#4656,8 km
Regenmenge				47,9 l/m ²	22:58	13.11.2010	#141,120 l/m ²
Evapotranspiration							#8,732 l/m ²
Sonnenschein-Zeit				8,00 h	16:12	21.11.2010	#40:58 h



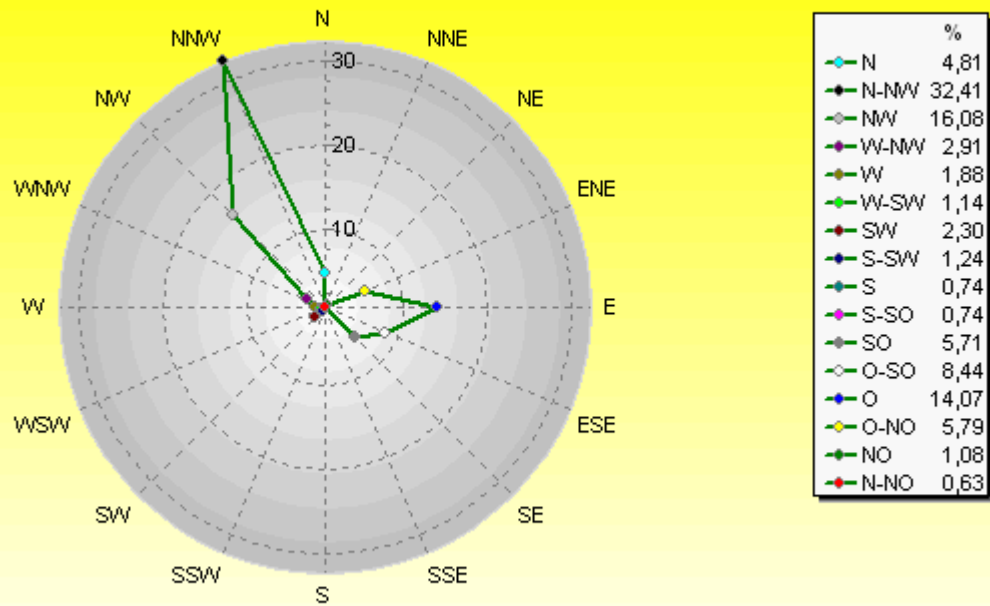






Verteilung Windrichtung November 2010

Borchen, Kreis Paderborn



3780 / 4871 Werte -> 56.3% Windstille - Ø 6,5km/h - Max. 64,3km/h - 4656,8 km

© WzWin32 - © Dr.Michael Heilos - Borchen